

ACURATE *neo*TM en pratique

Mohammed Nejjari
Centre cardiologique du Nord
Saint-Denis - France



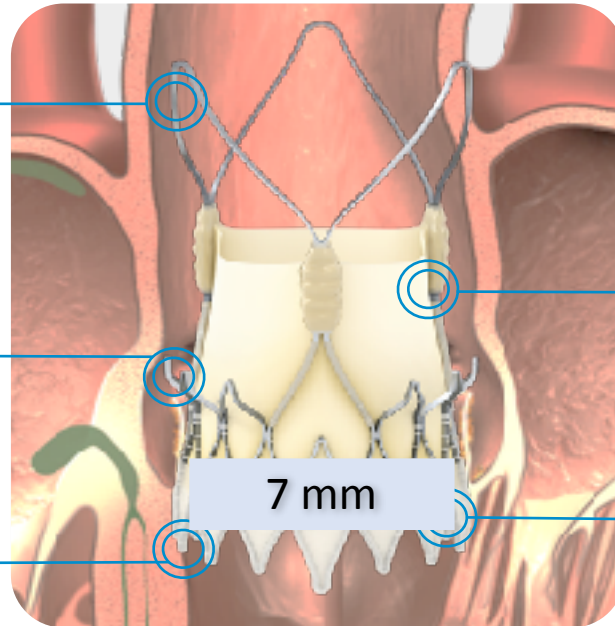
Conflits d'intérêts

- Proctor Boston Scientific
- Proctor and consulting Abbott

ARCHES DE STABILISATION

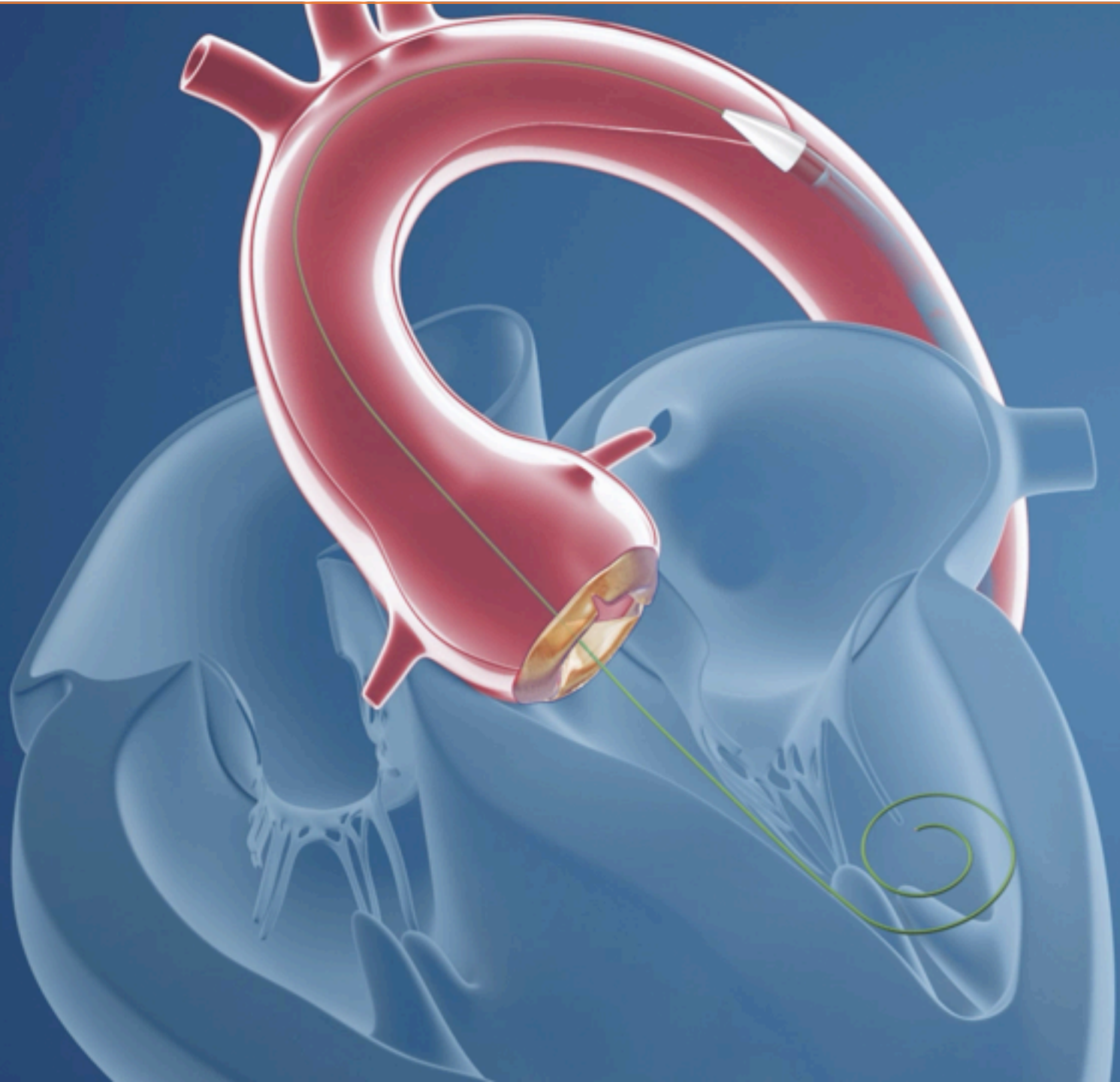
COURONNE SUPÉRIEURE

COURONNE INFÉRIEURE

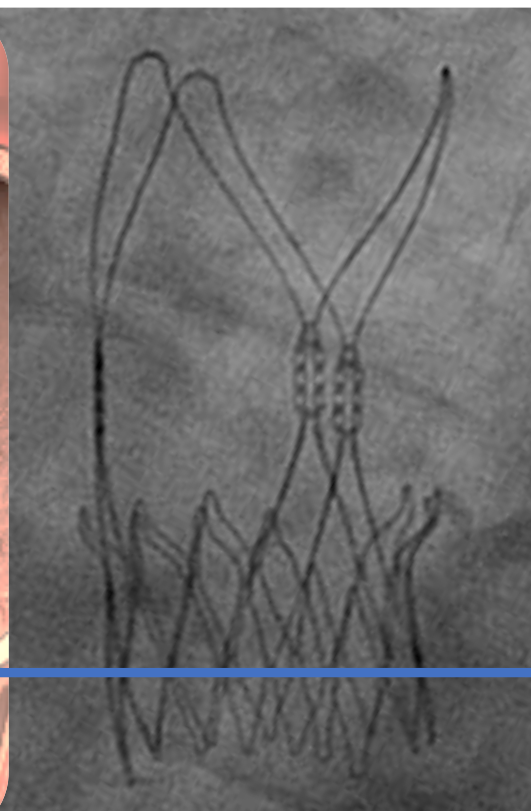
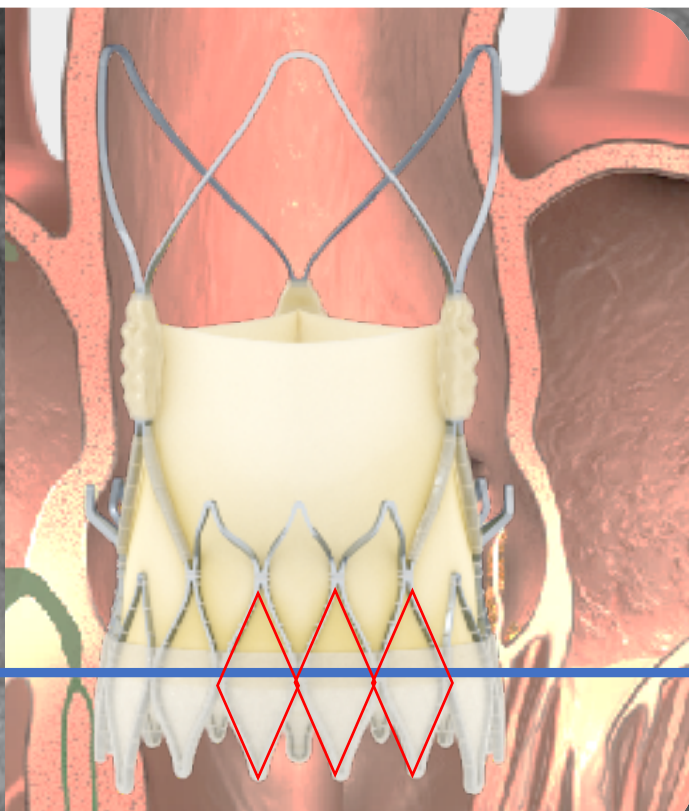
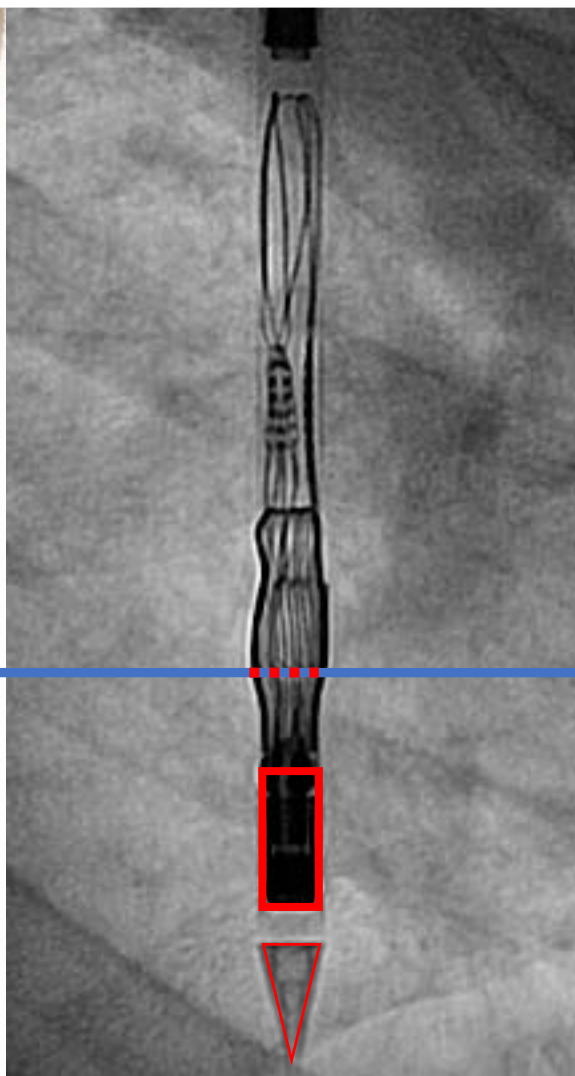
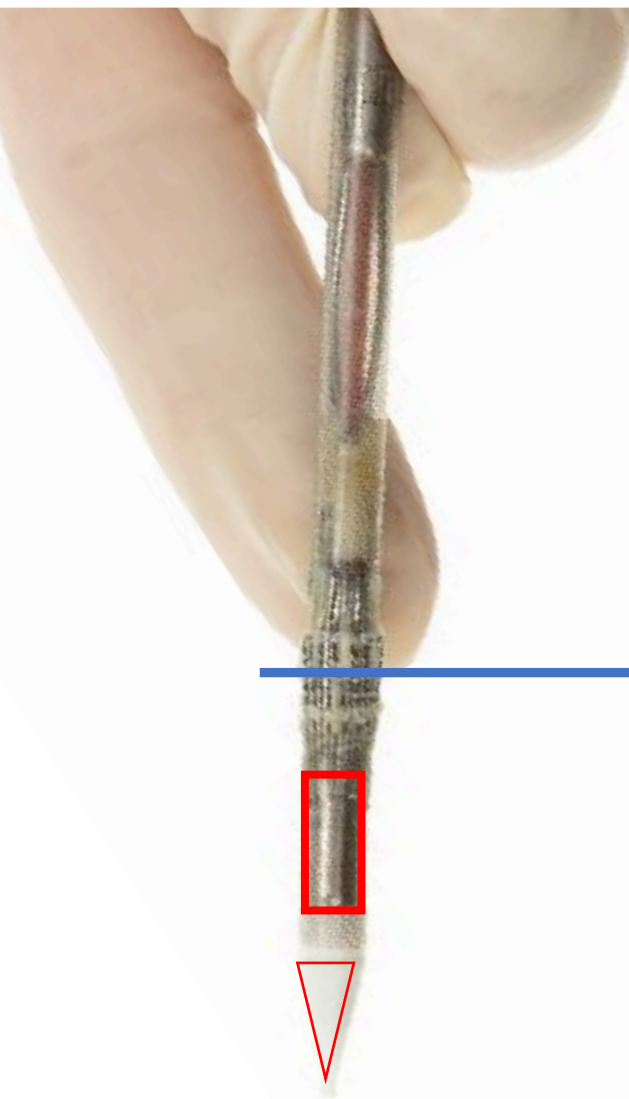


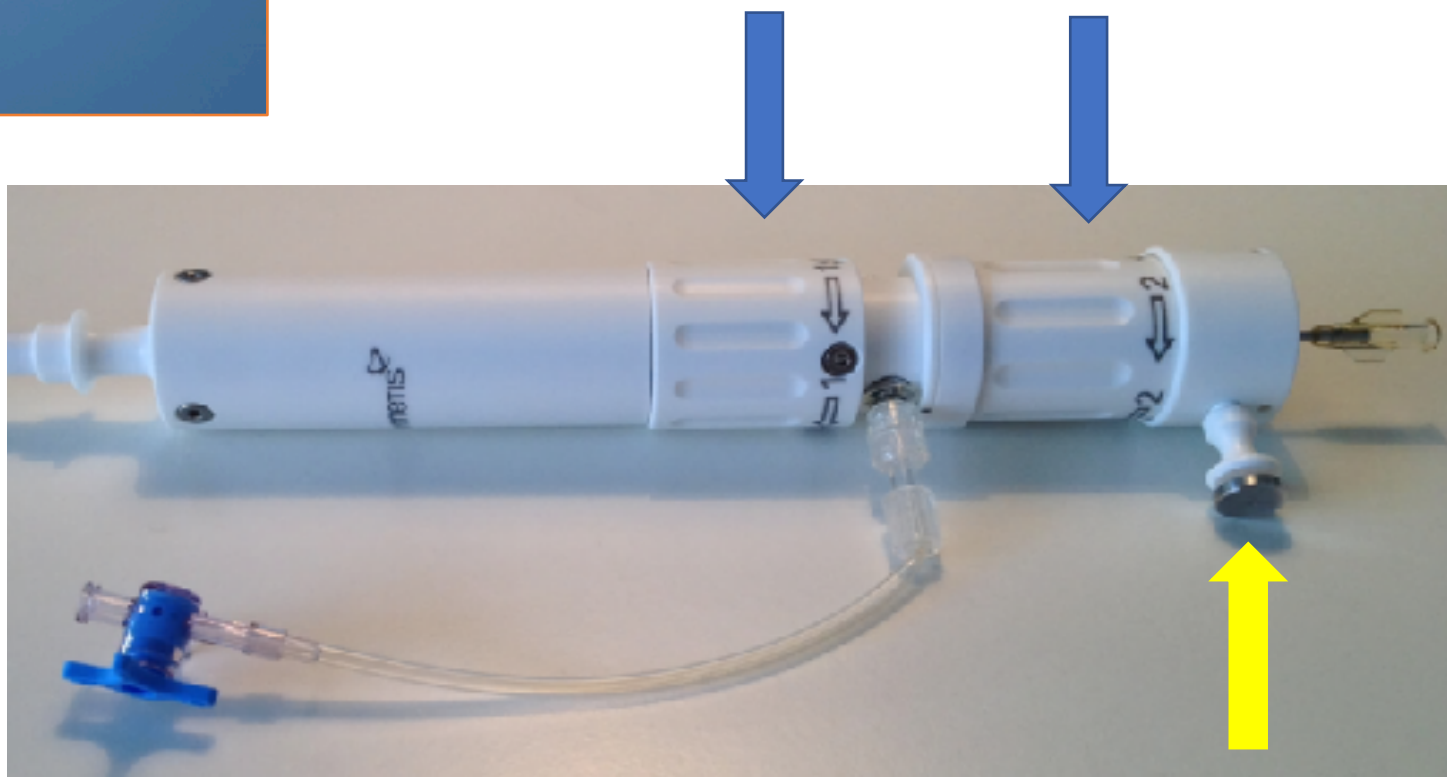
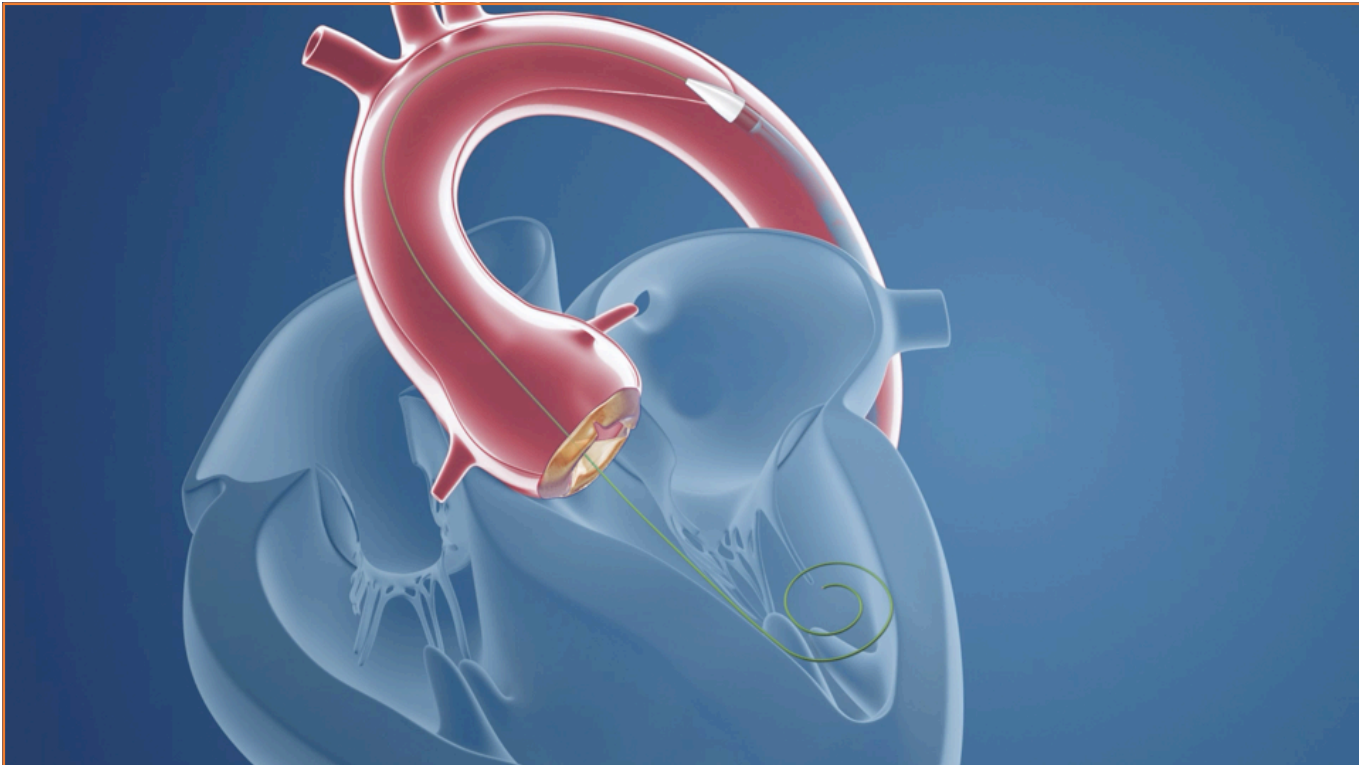
VALVE SUPRA-ANNULAIRE

**COLLERETTE ANTI-FUITES
PARAVALVULAIRES**





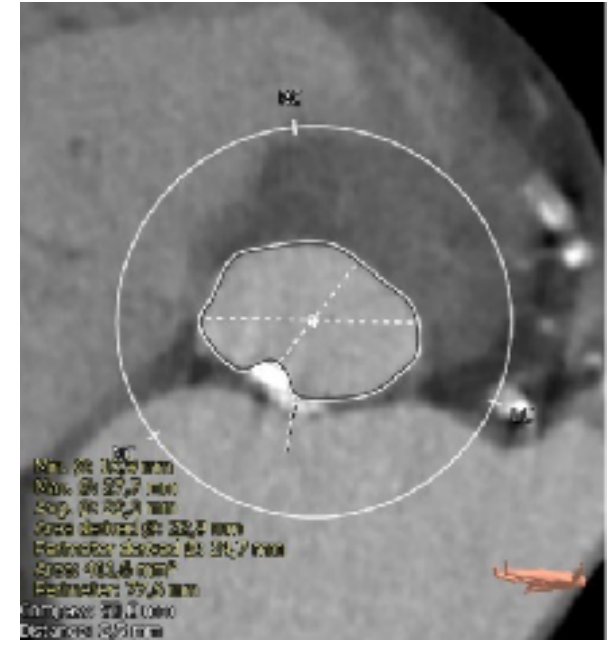
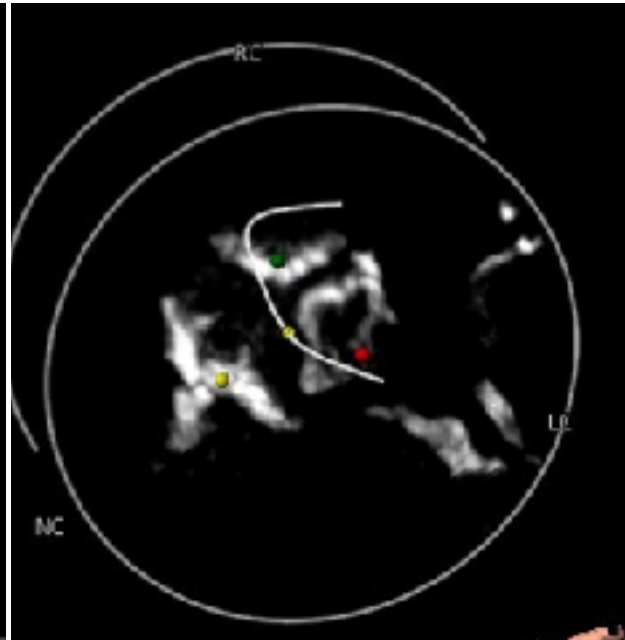
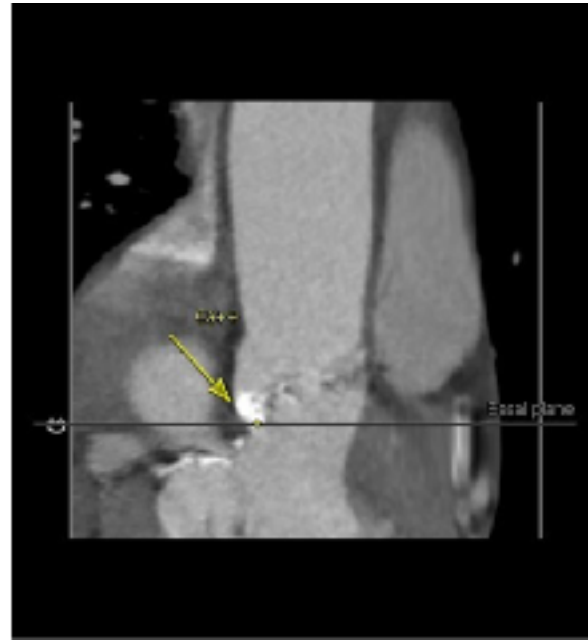




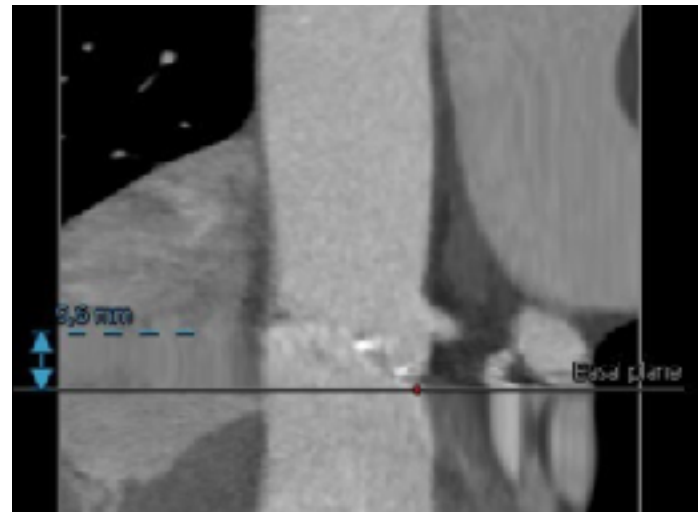
Sizing

Aortic annulus

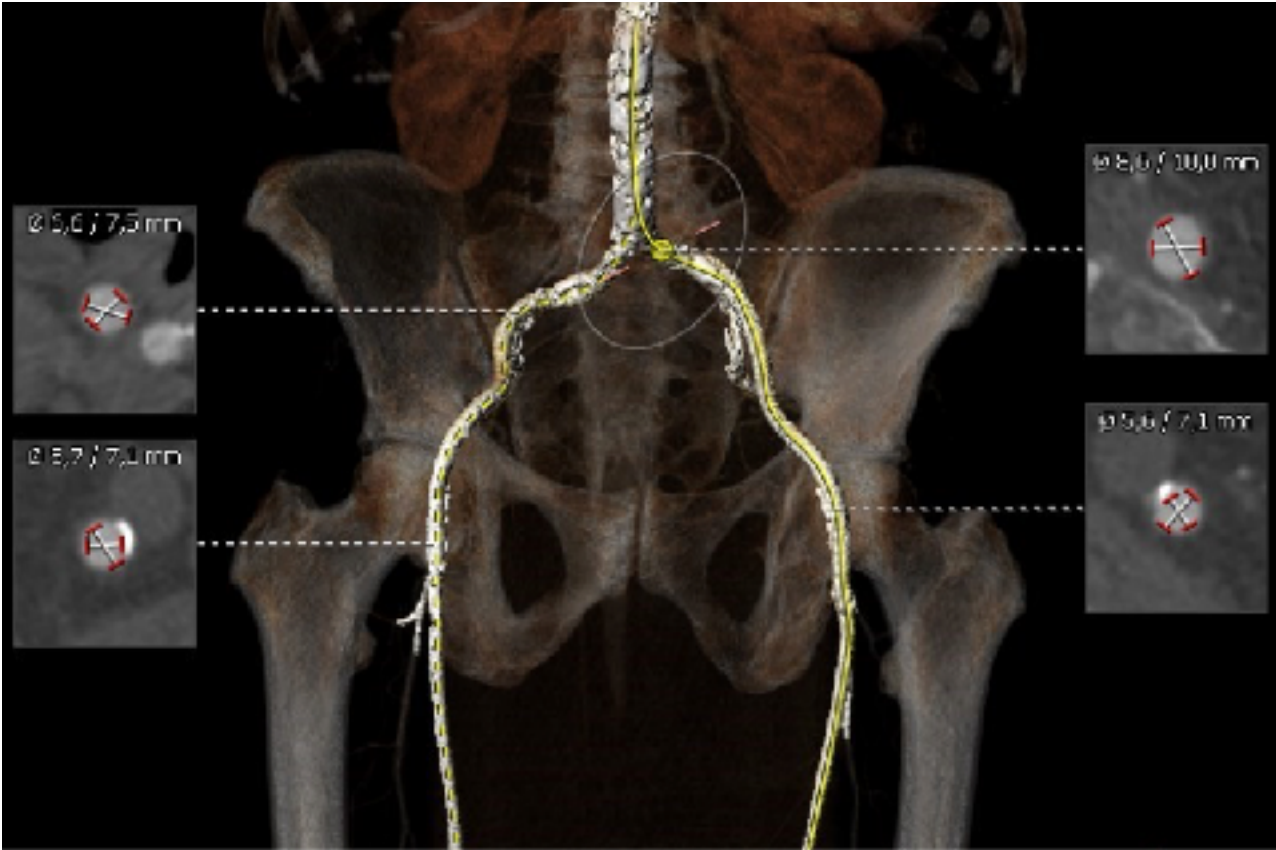
LVOT



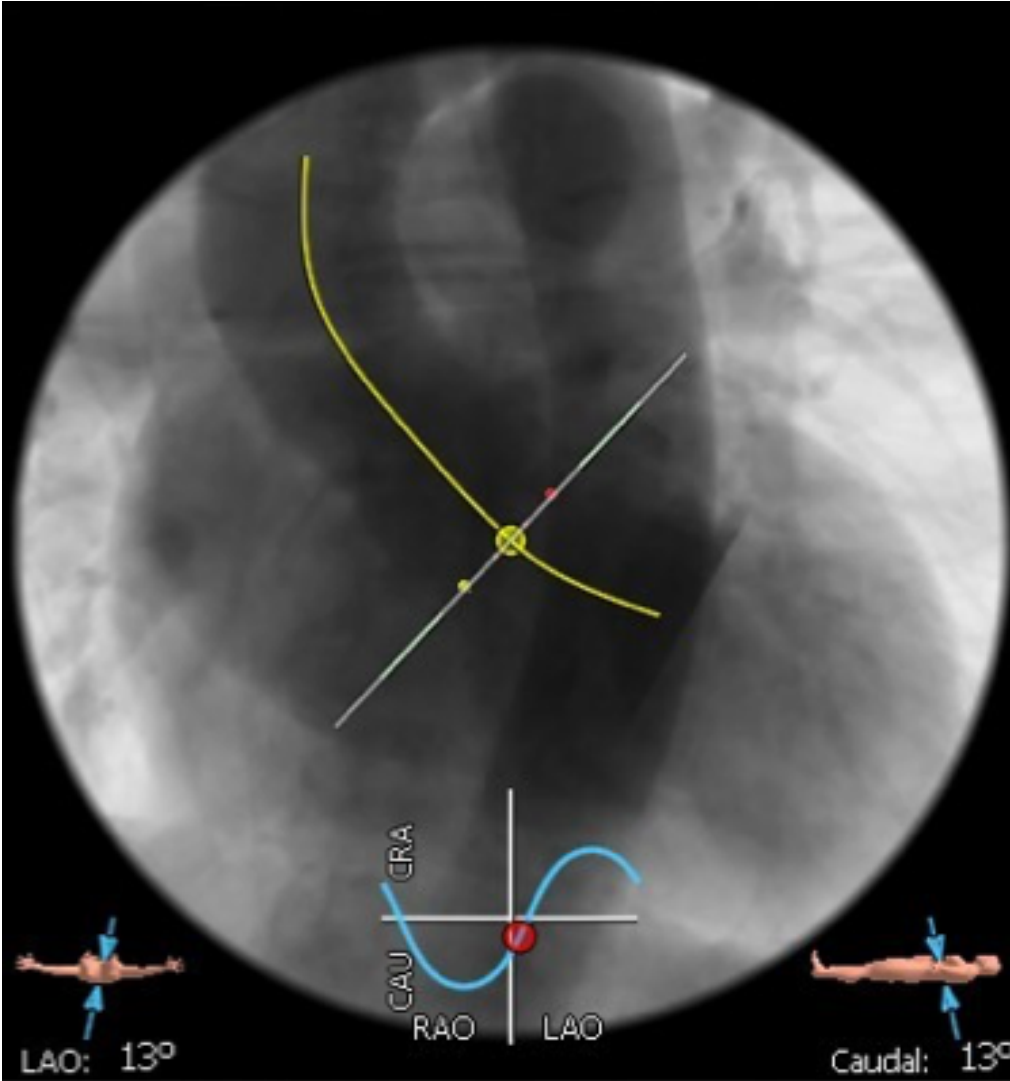
CA height



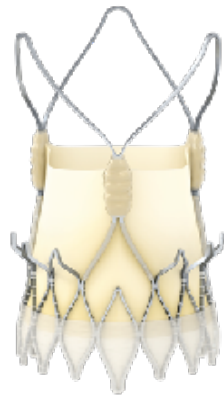
IF arteries



Ideal projection for implantation



ACURATE *neo*™



Taille de la valve

S – 23 mm

M – 25 mm

L – 27 mm

Diamètre de l'anneau aortique*

$21 \text{ mm} \leq \text{Ø de l'anneau} \leq 23 \text{ mm}$

$23 \text{ mm} < \text{Ø de l'anneau} \leq 25 \text{ mm}$

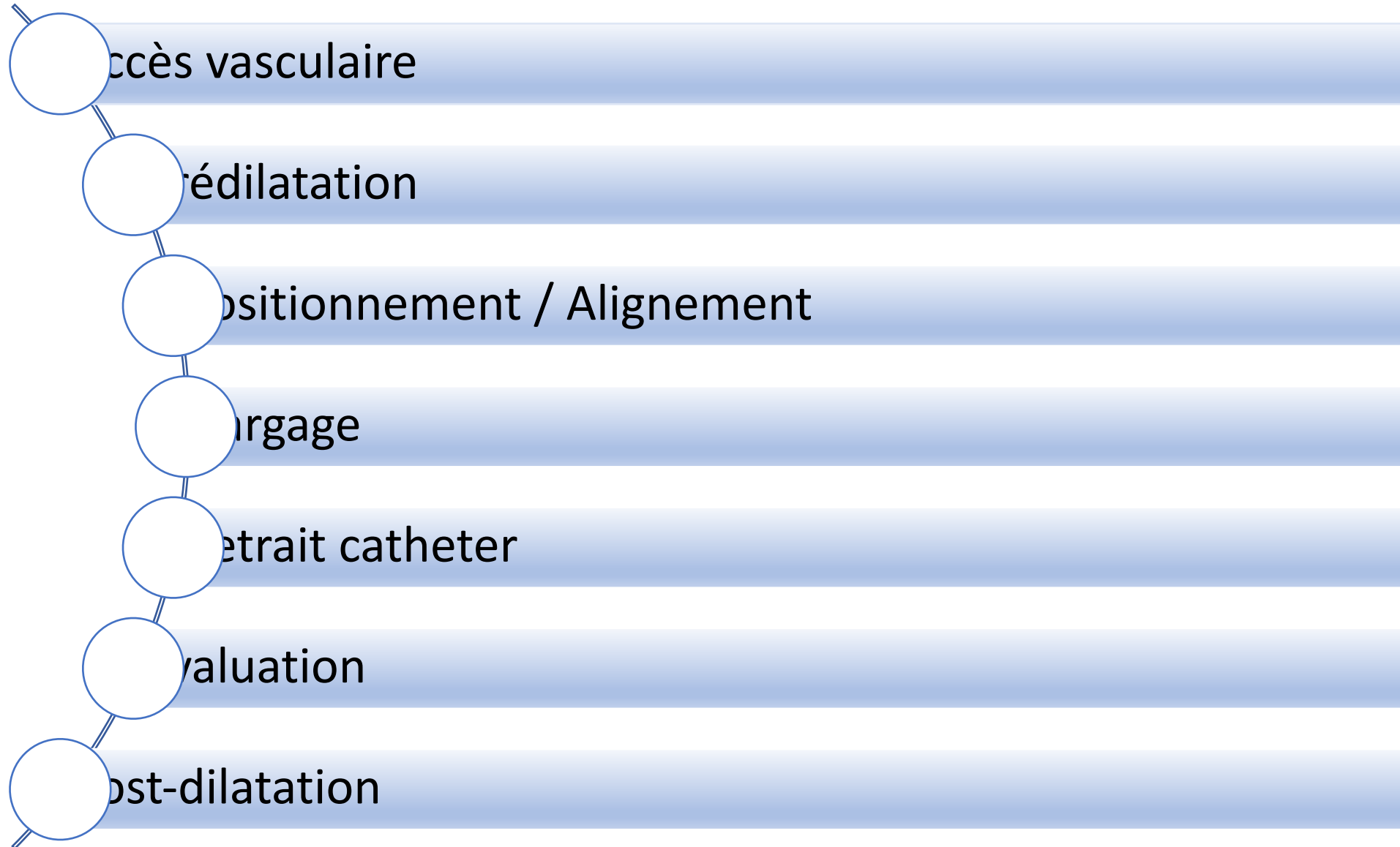
$25 \text{ mm} < \text{Ø de l'anneau} \leq 27 \text{ mm}$

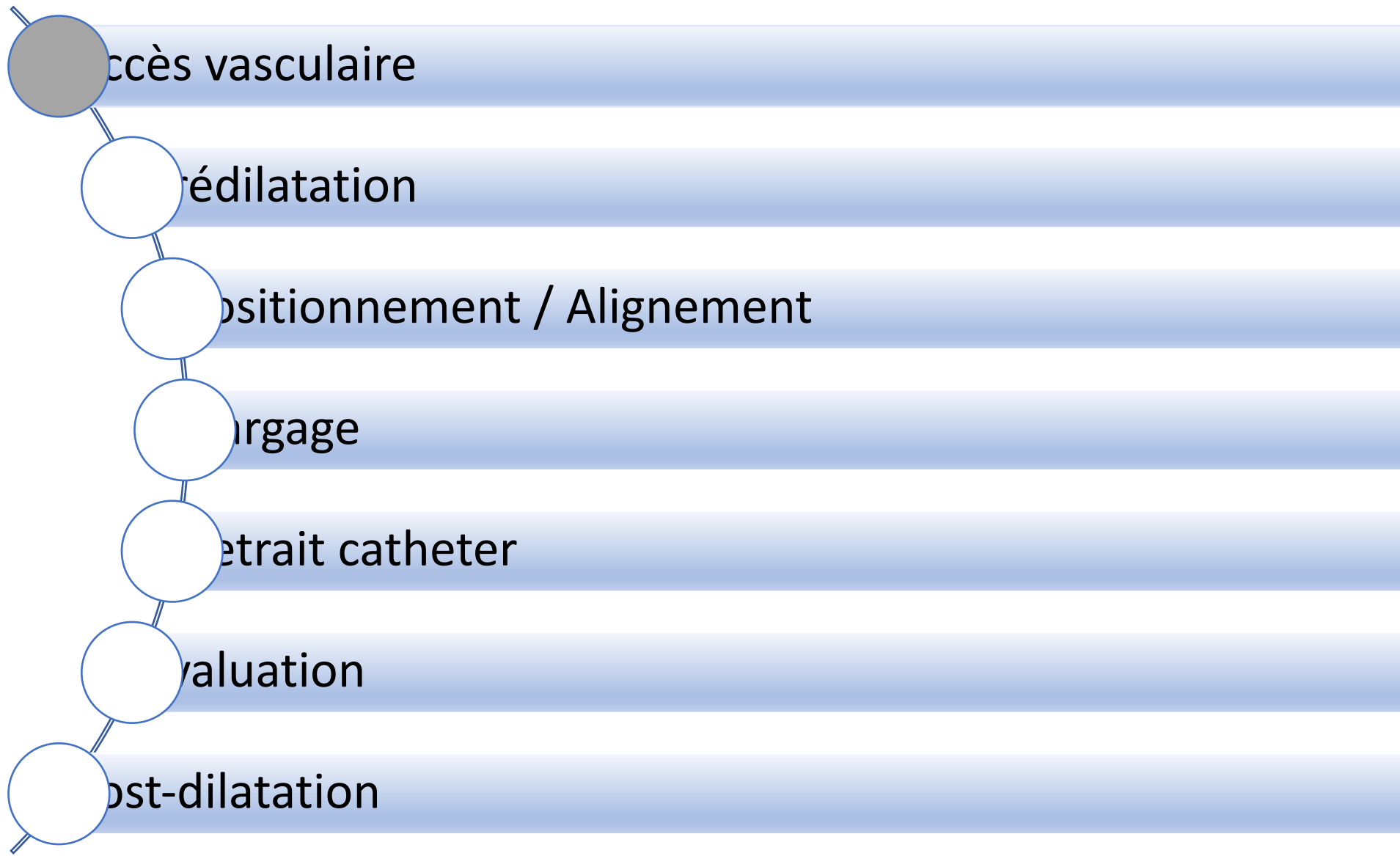
Périmètre de l'anneau aortique

$66 \text{ mm} \leq \text{C de l'anneau} \leq 72 \text{ mm}$

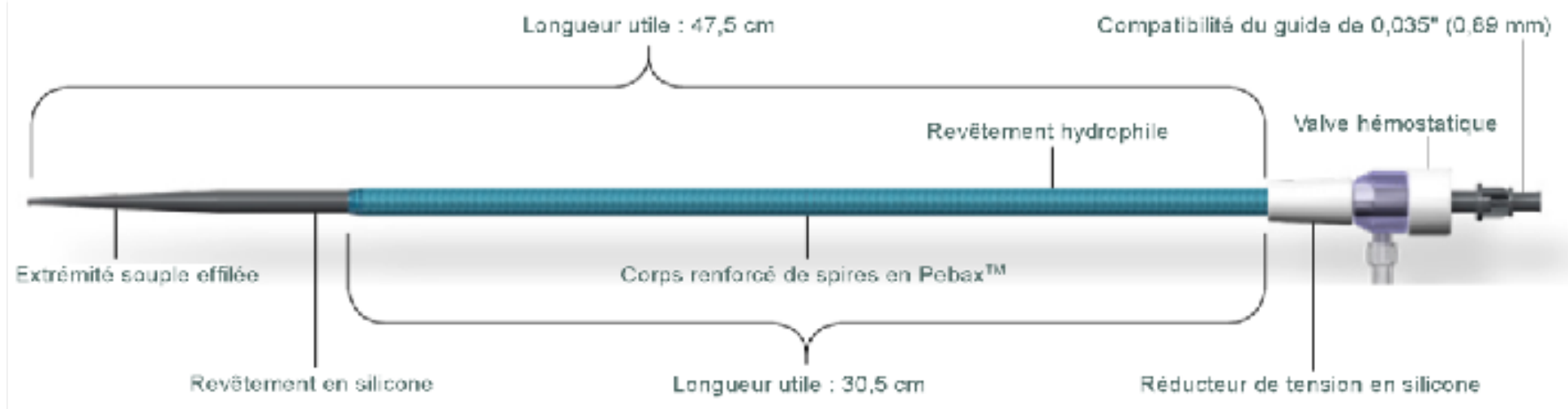
$72 \text{ mm} < \text{C de l'anneau} \leq 79 \text{ mm}$

$79 \text{ mm} < \text{C de l'anneau} \leq 85 \text{ mm}$





LOTUS™ TF sheath 18F



Ergonomic Hub

Provides total control

Responsive Tri-Fold Seams

Minimizes vessel trauma

Soft Radiopaque Tip

Enhances visualization



Advanced Hemostasis Valve

Minimizes blood loss

Stability Layer

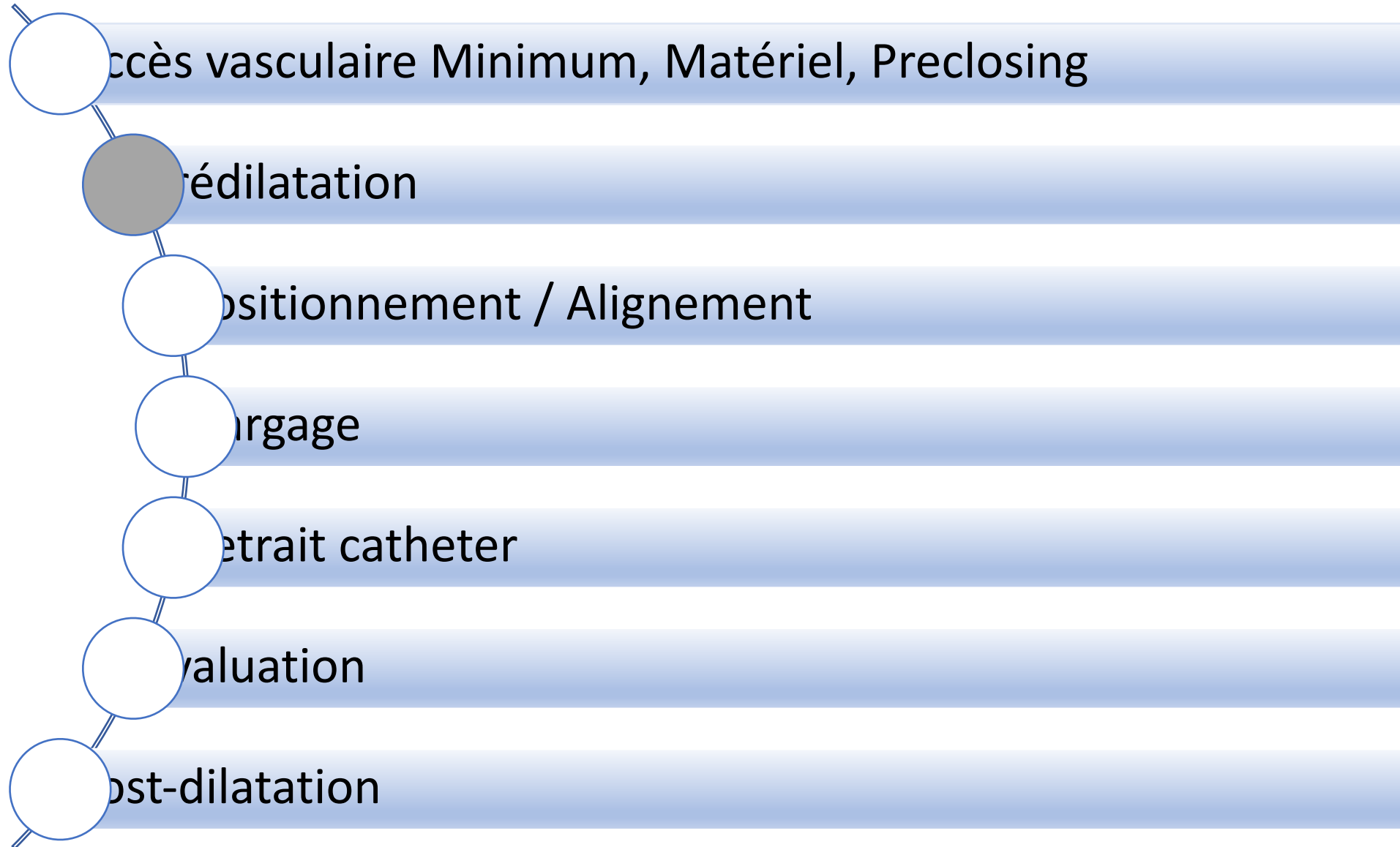
Increases stability and sealing

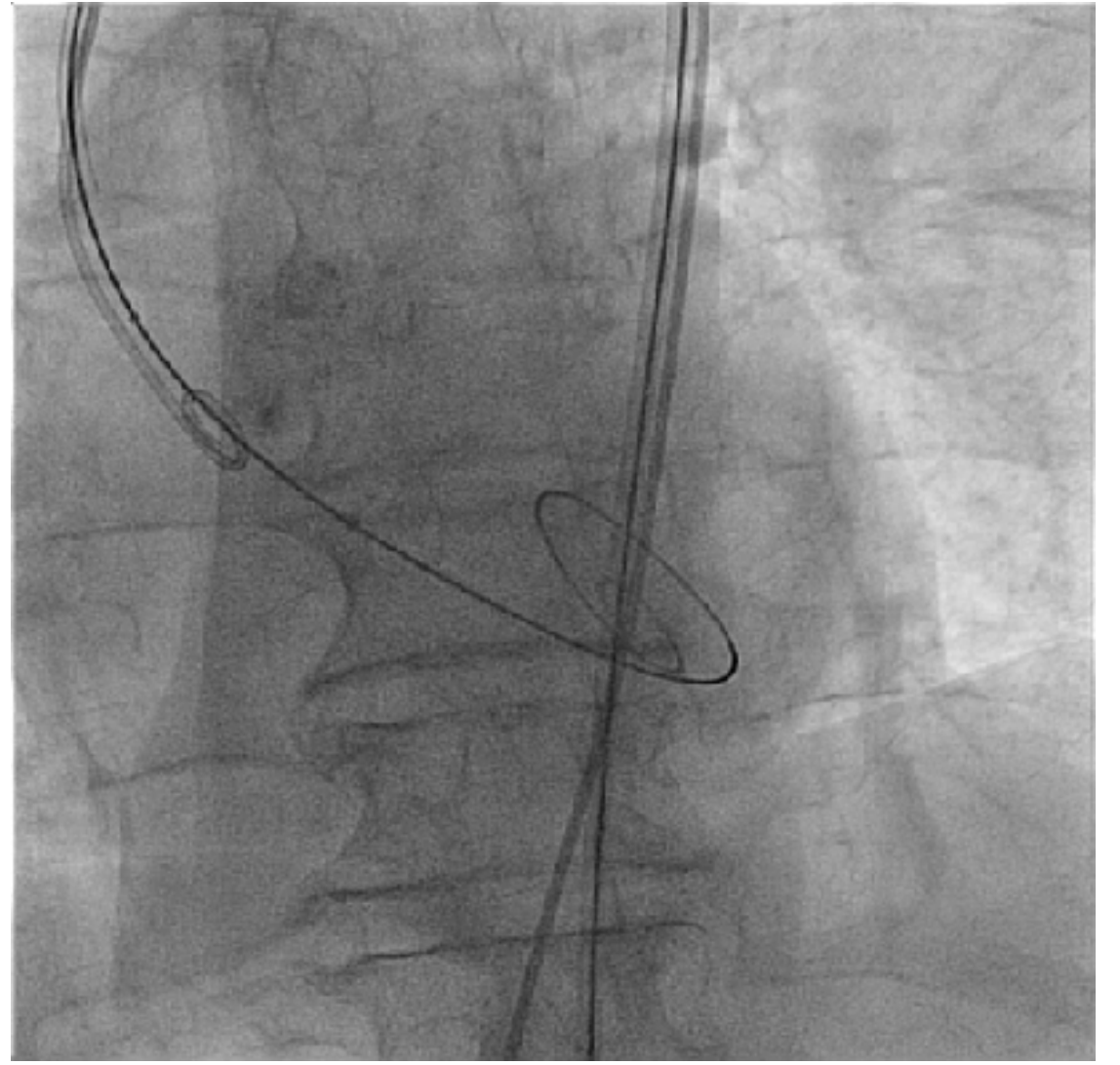
State-of-the-art Hydrophilic Coating

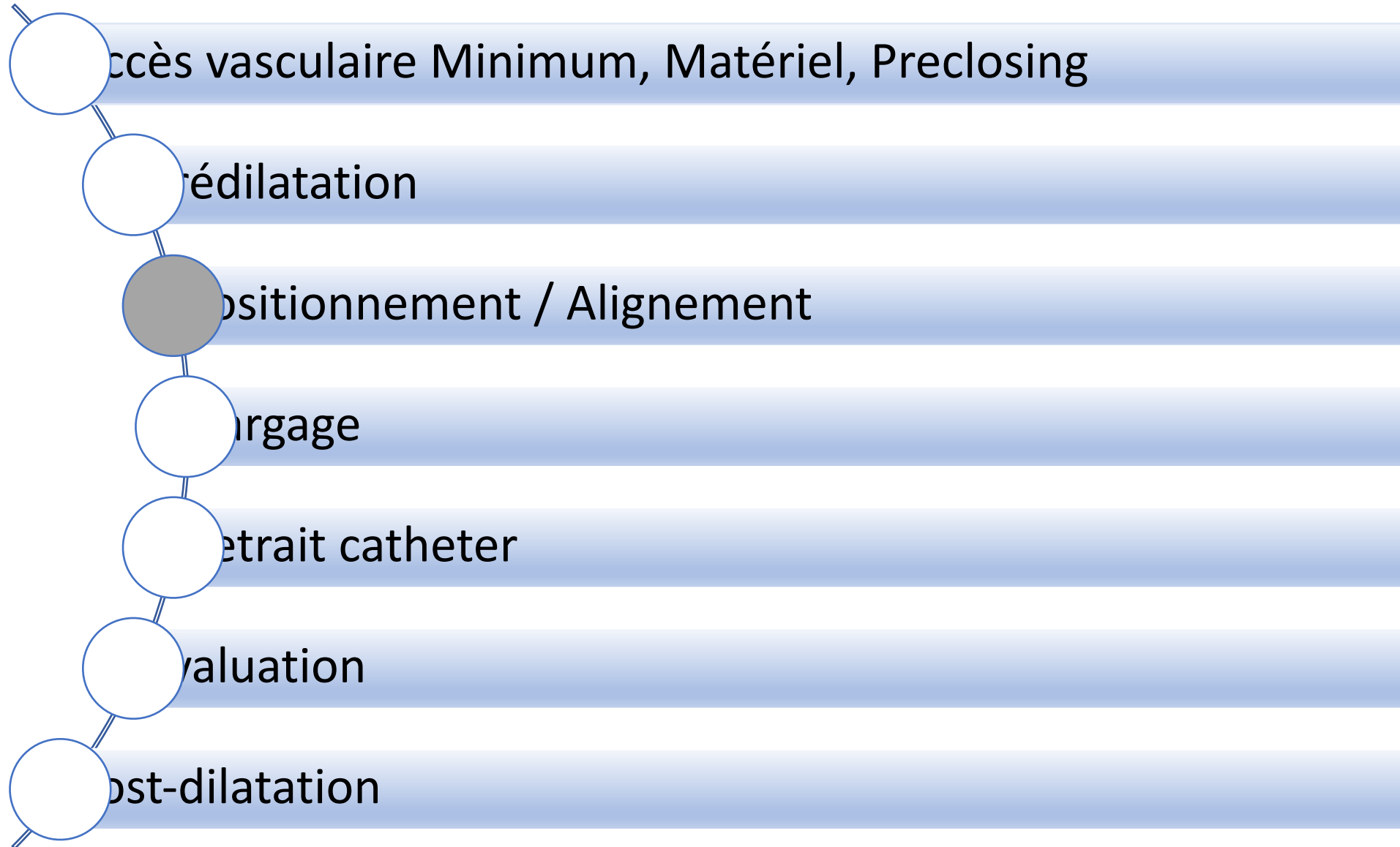
Eases insertion and provides atraumatic removal

iSleeve 14F





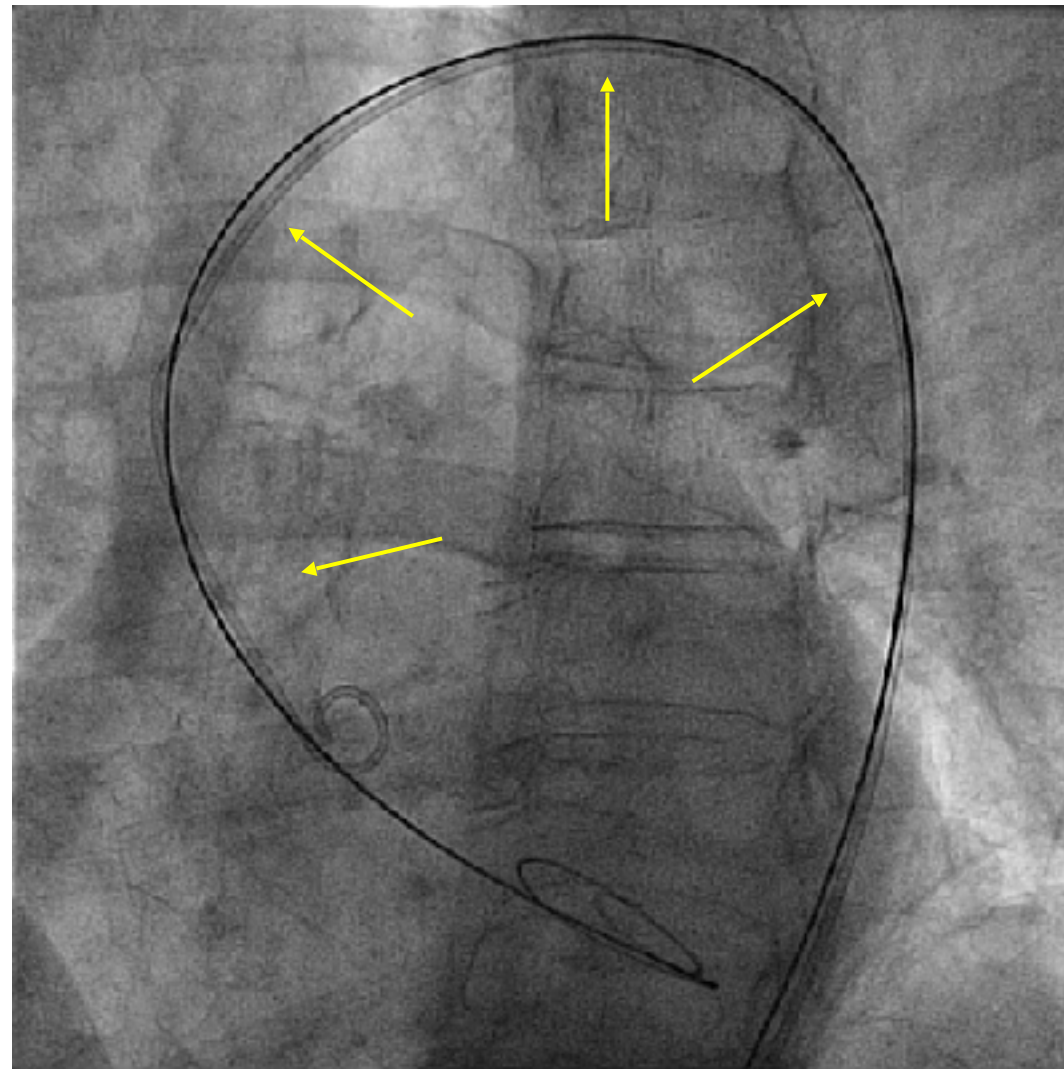


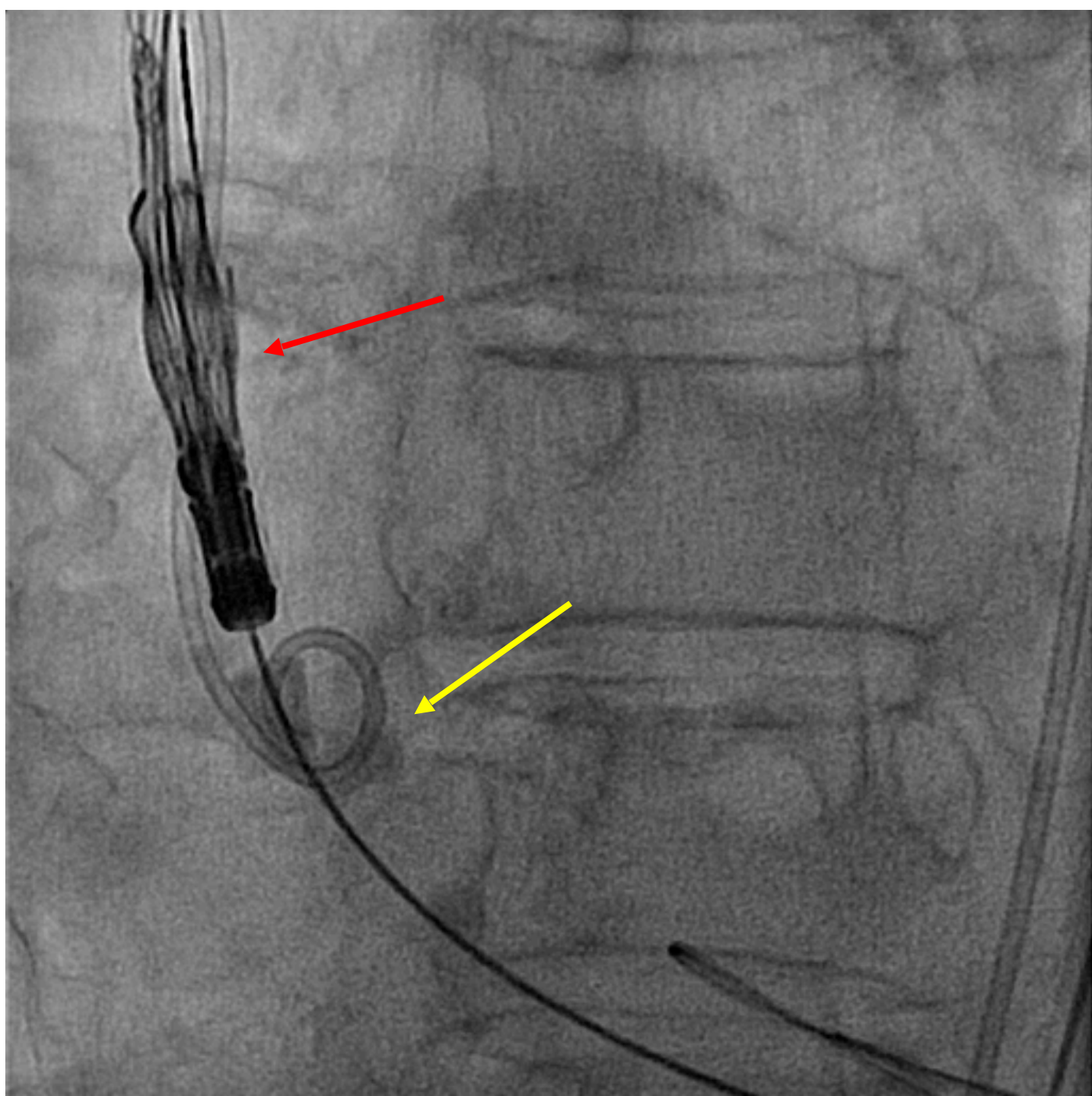


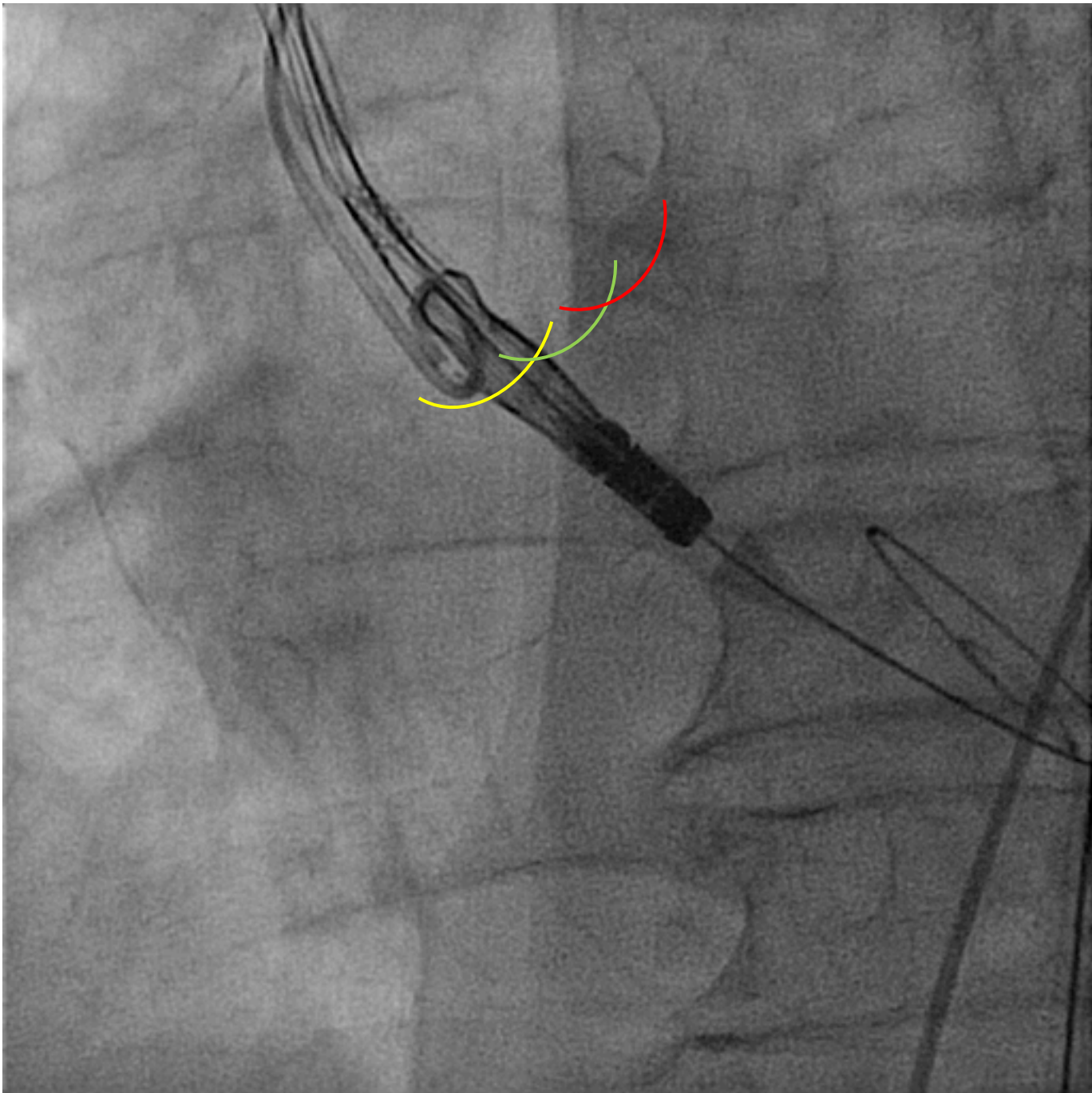
System with Tension

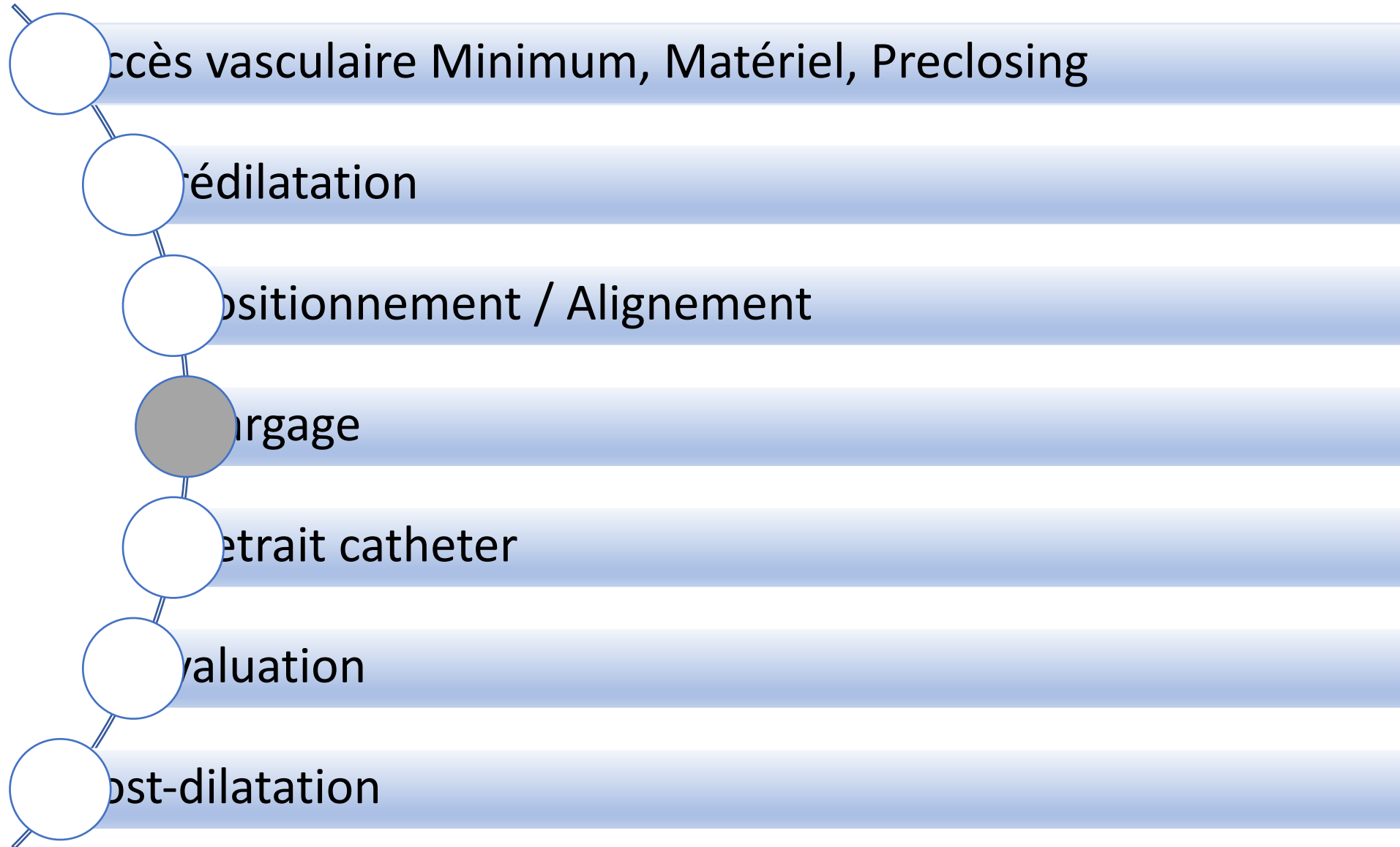


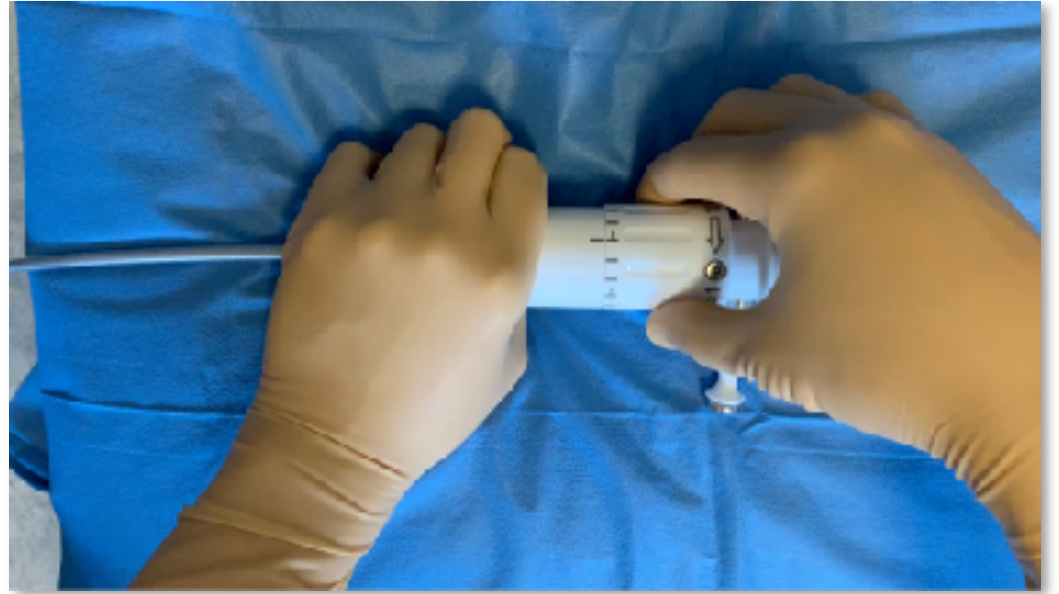
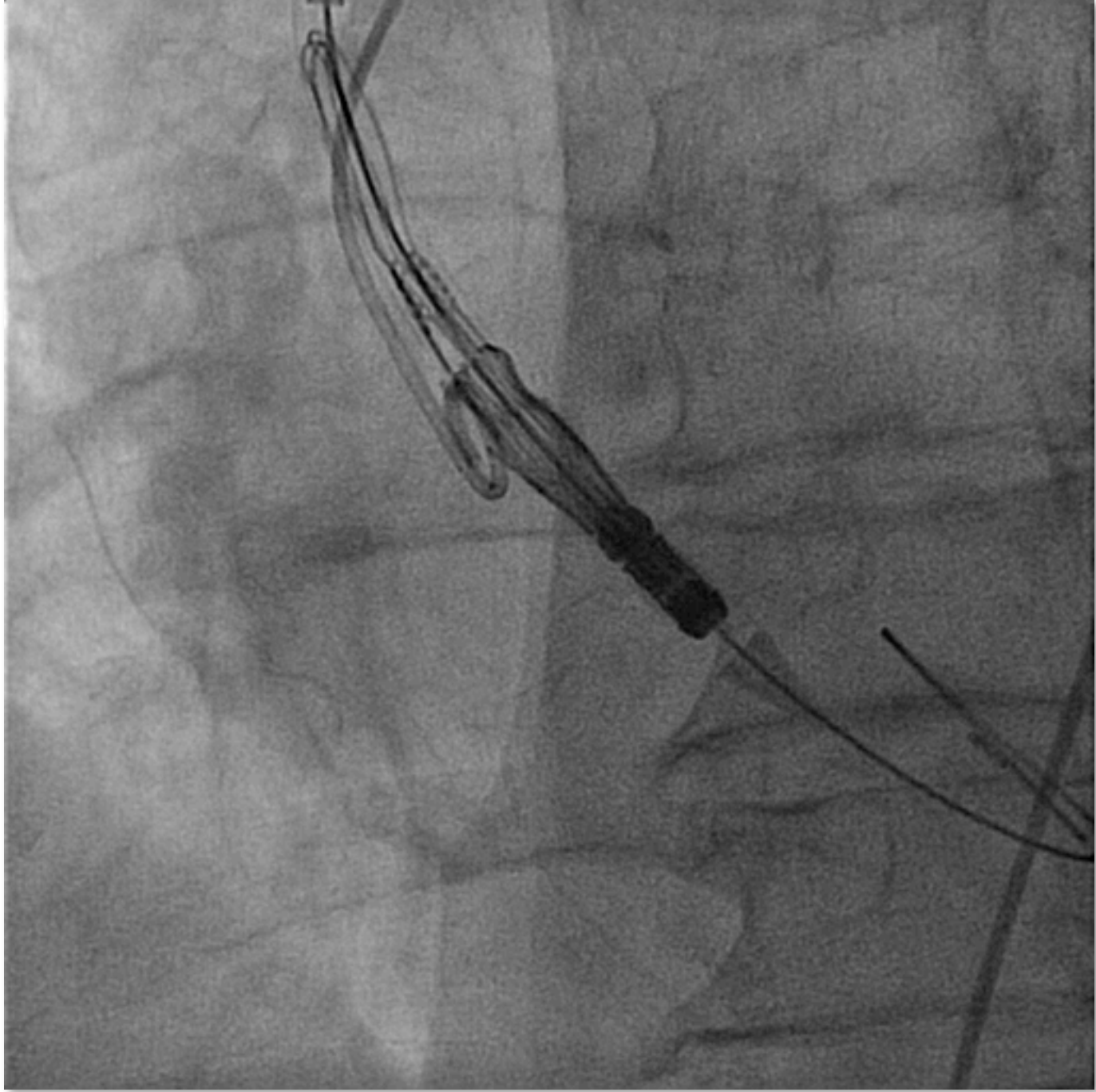
System without Tension

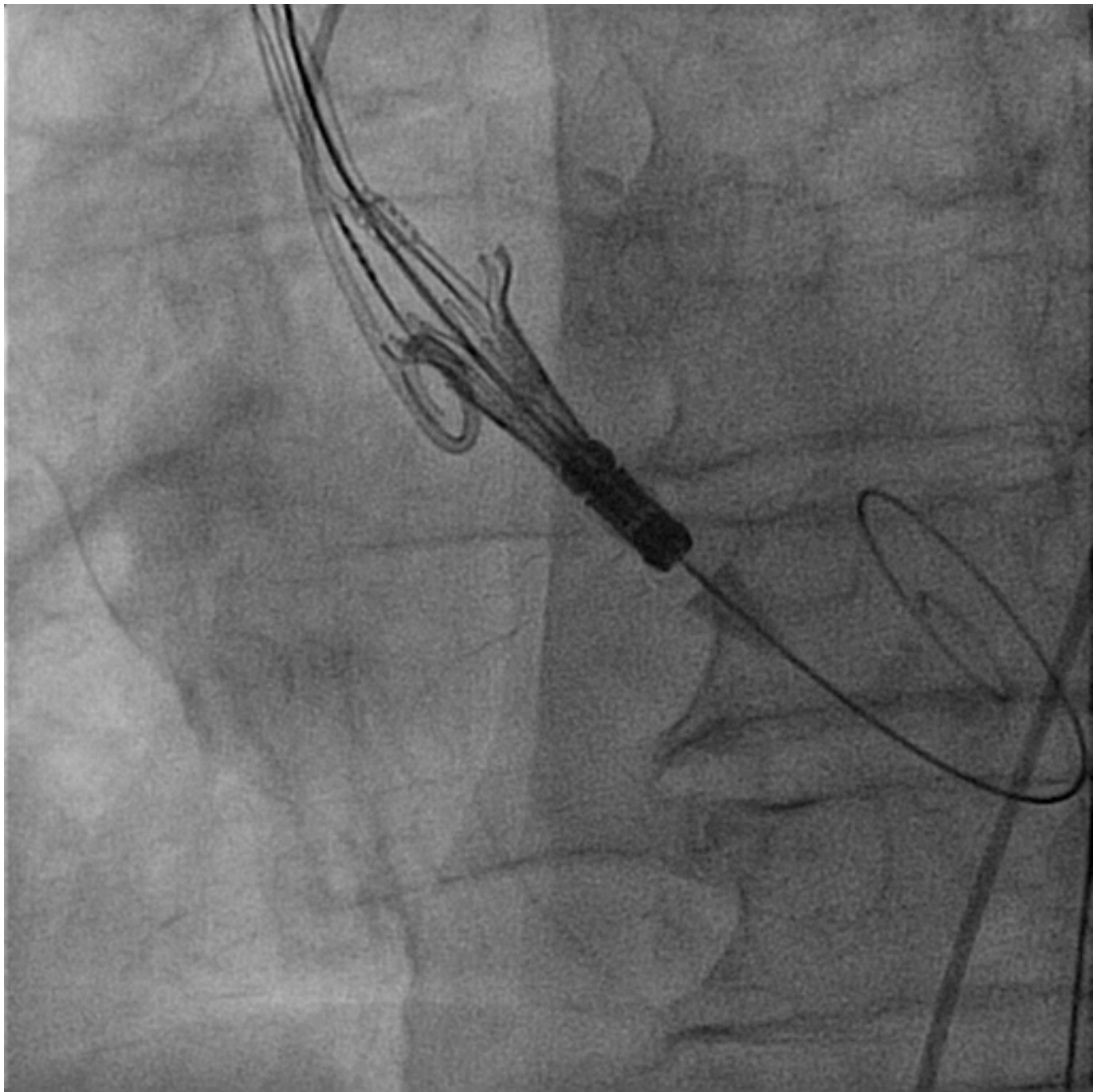


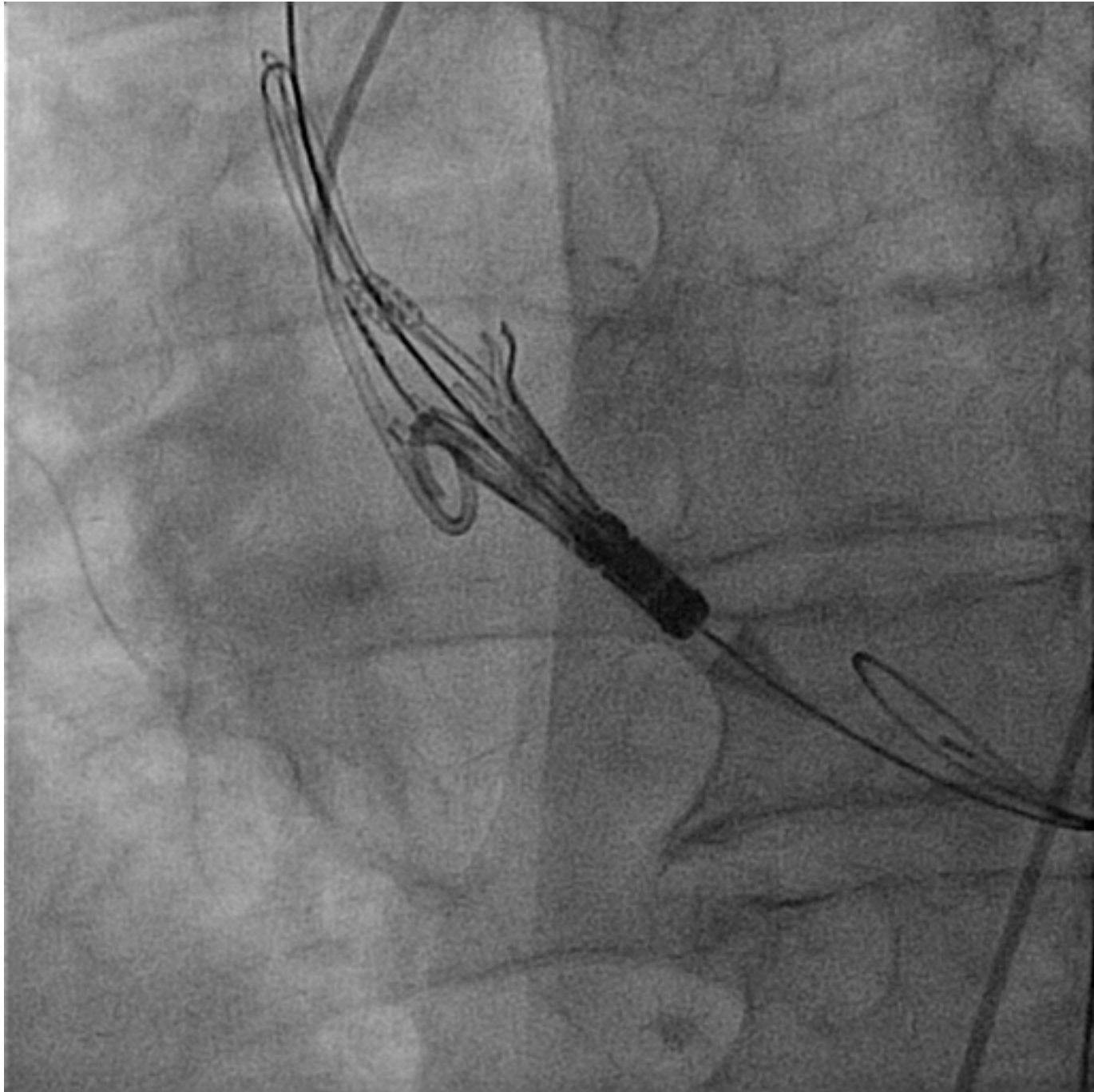


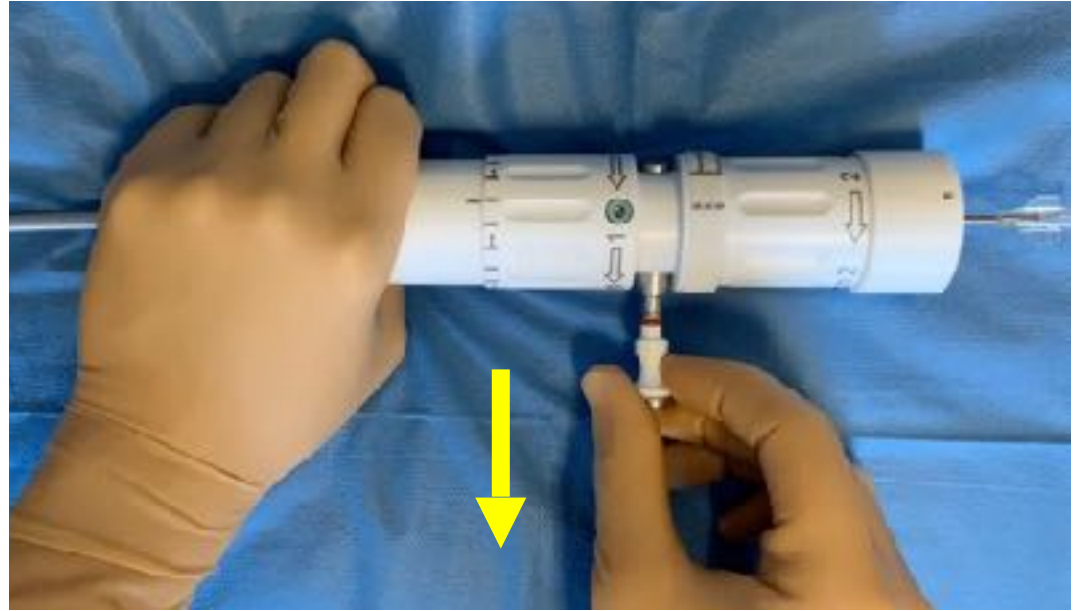
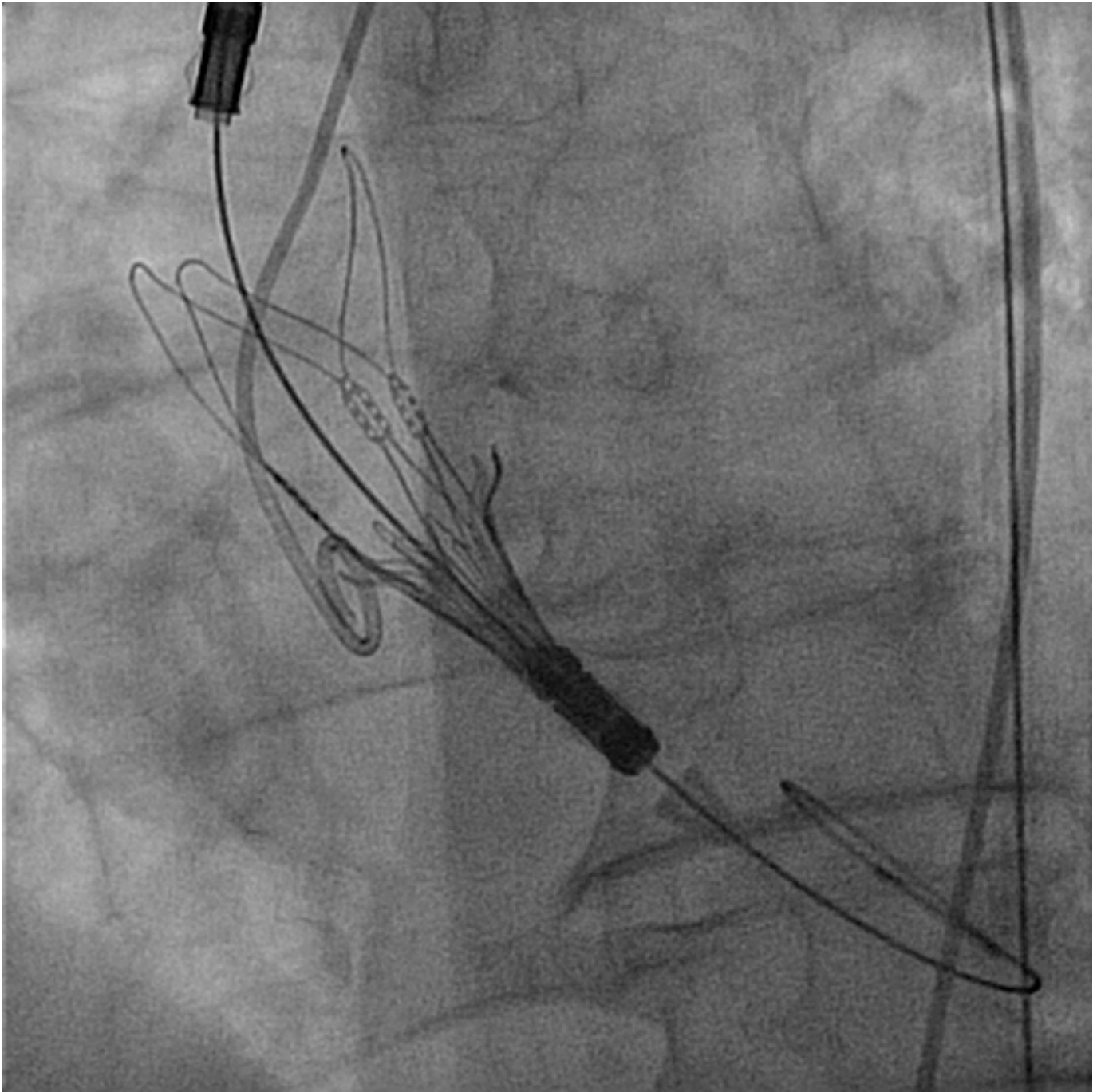


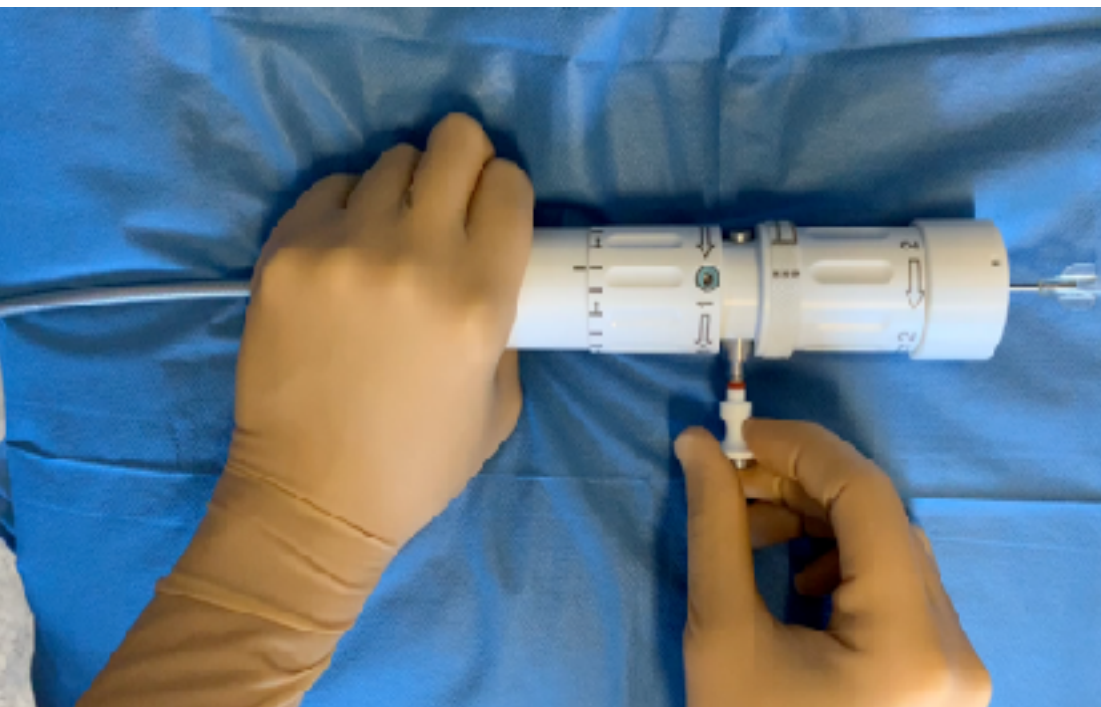
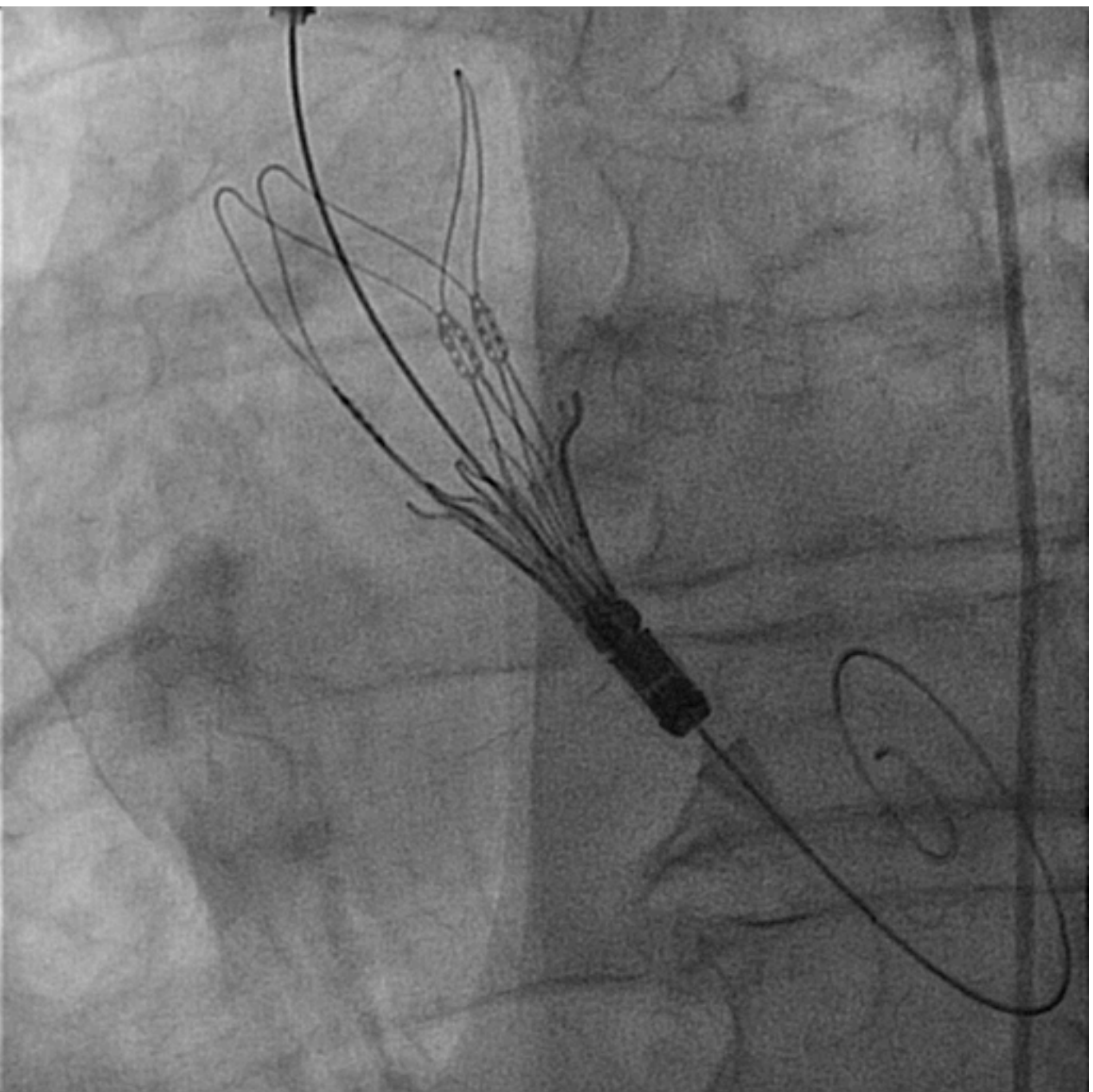


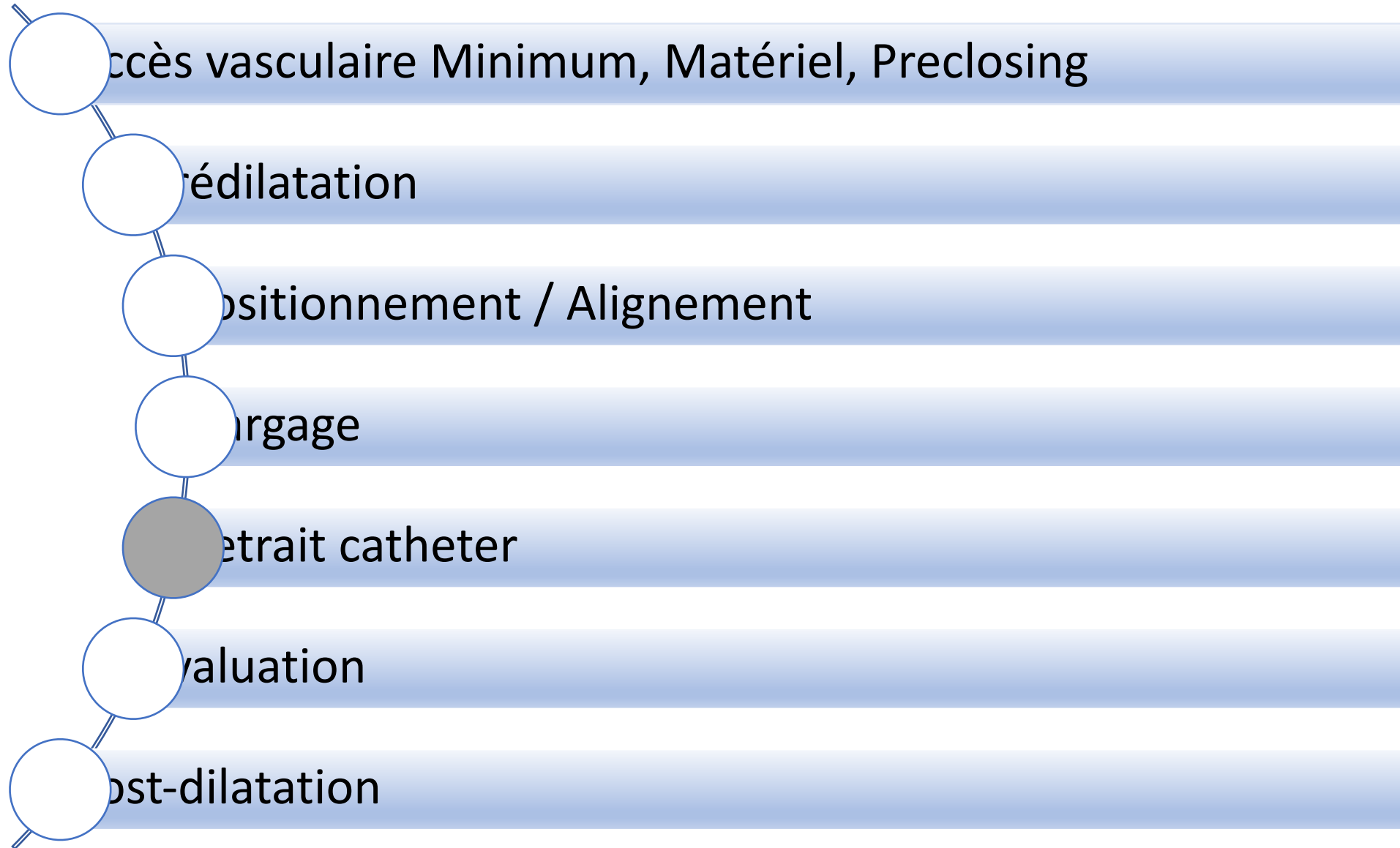


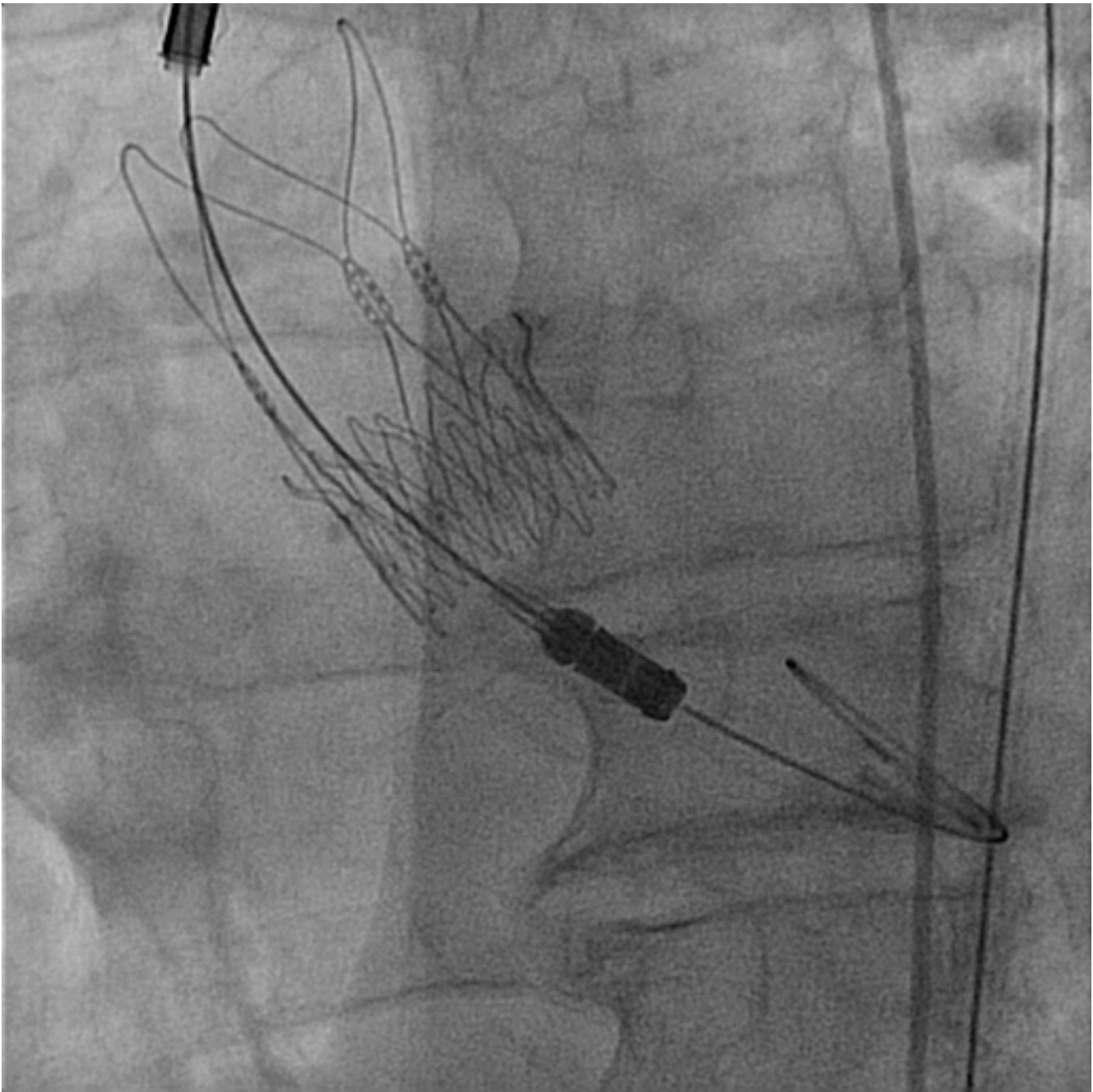


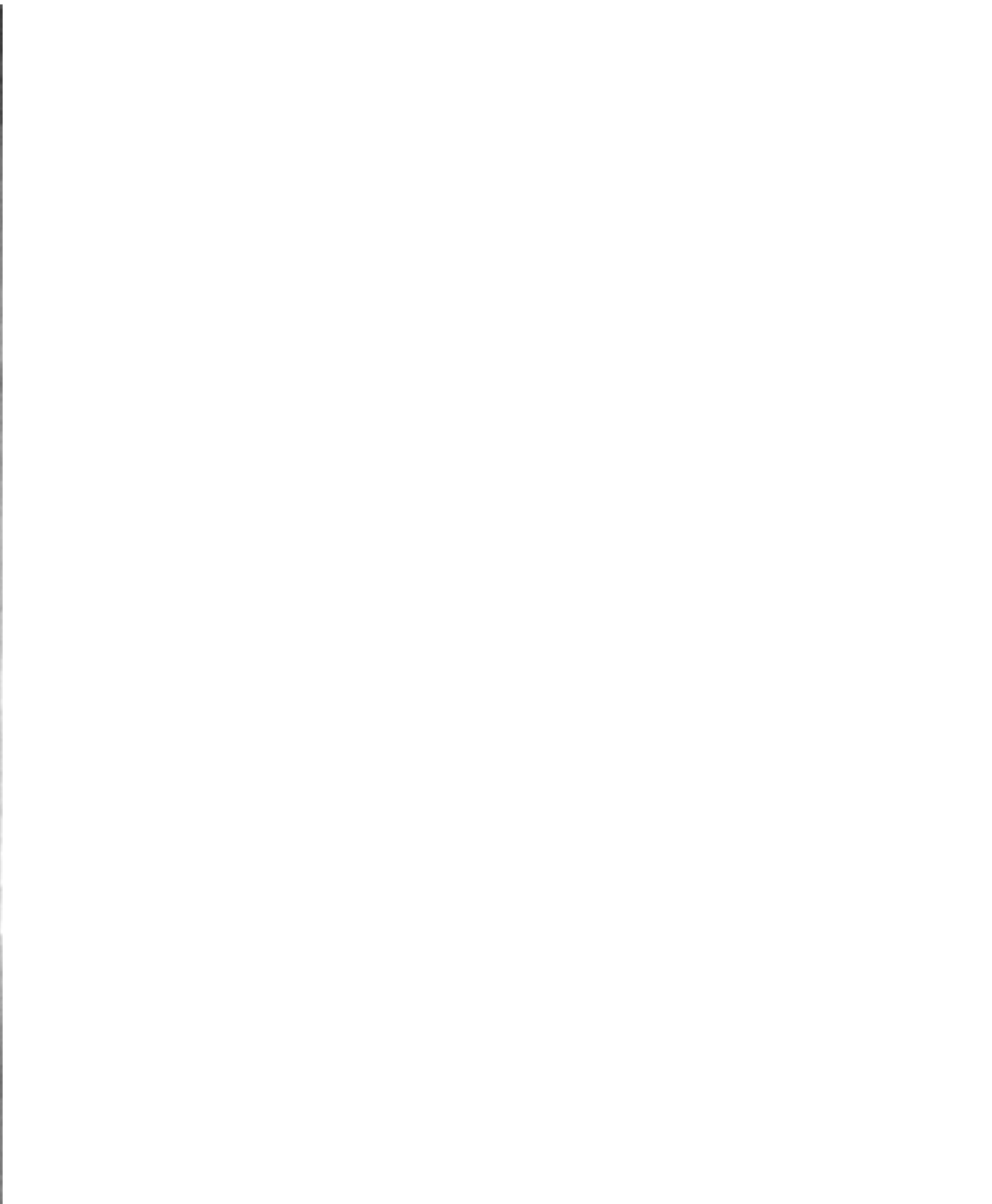
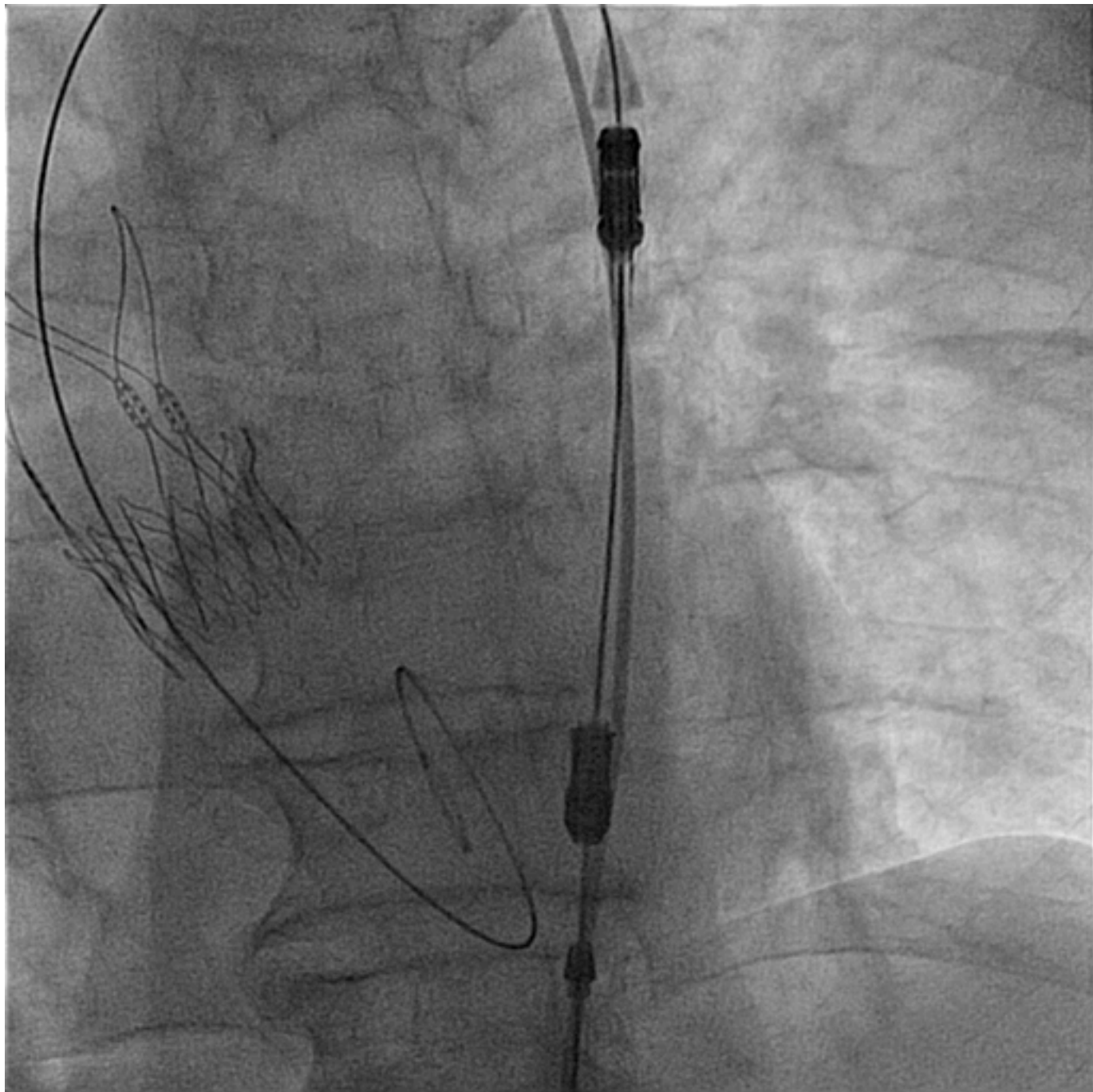


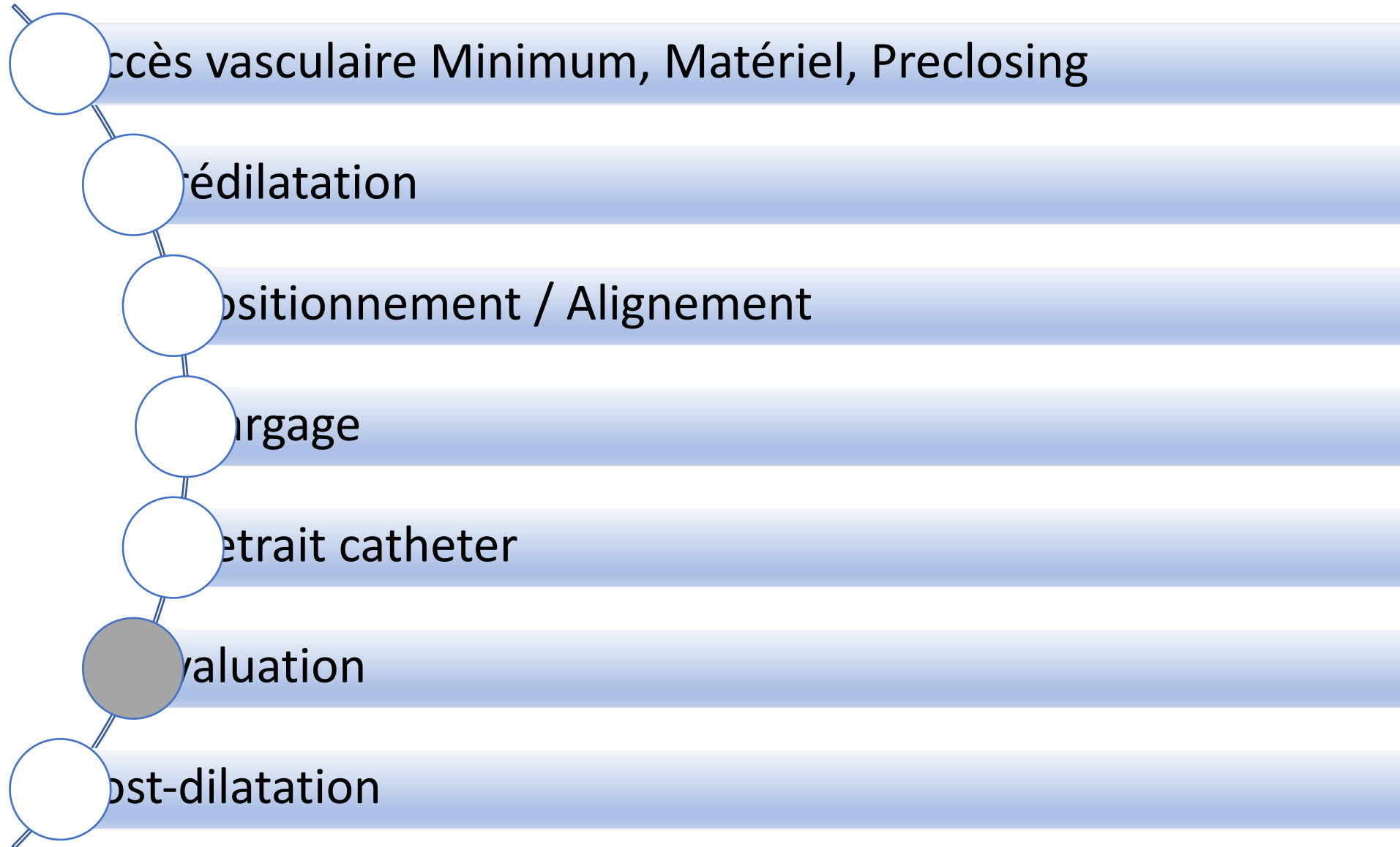


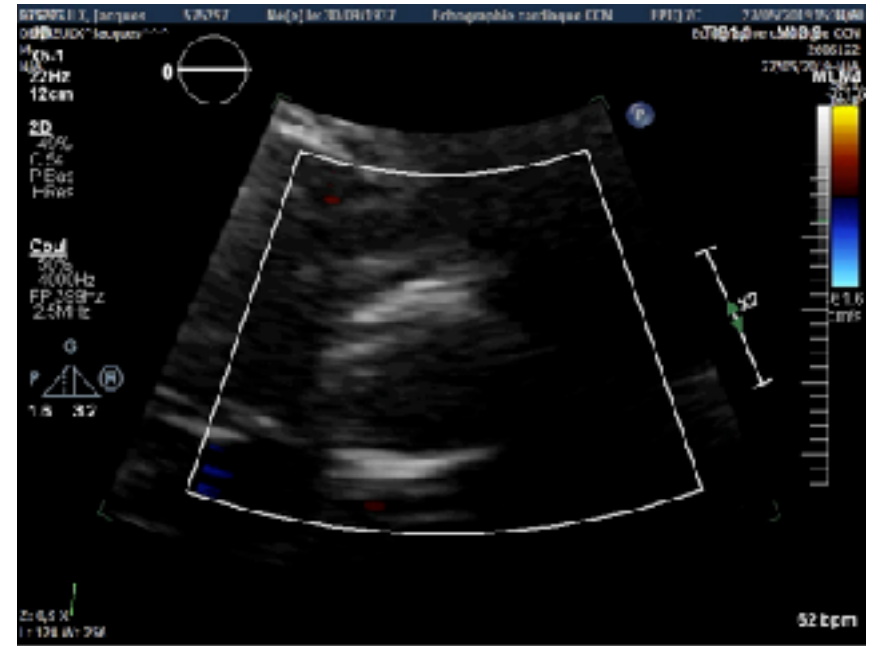


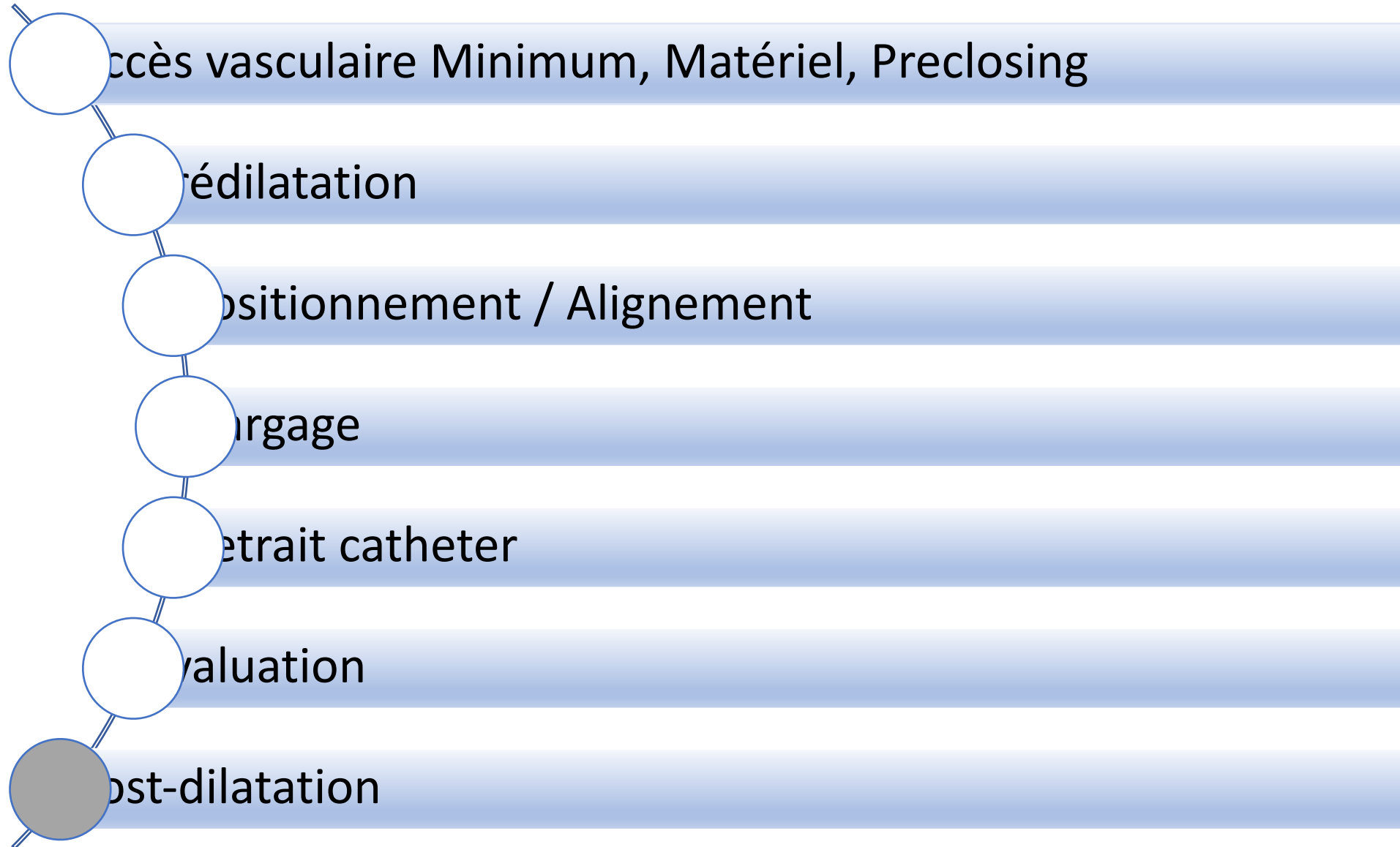


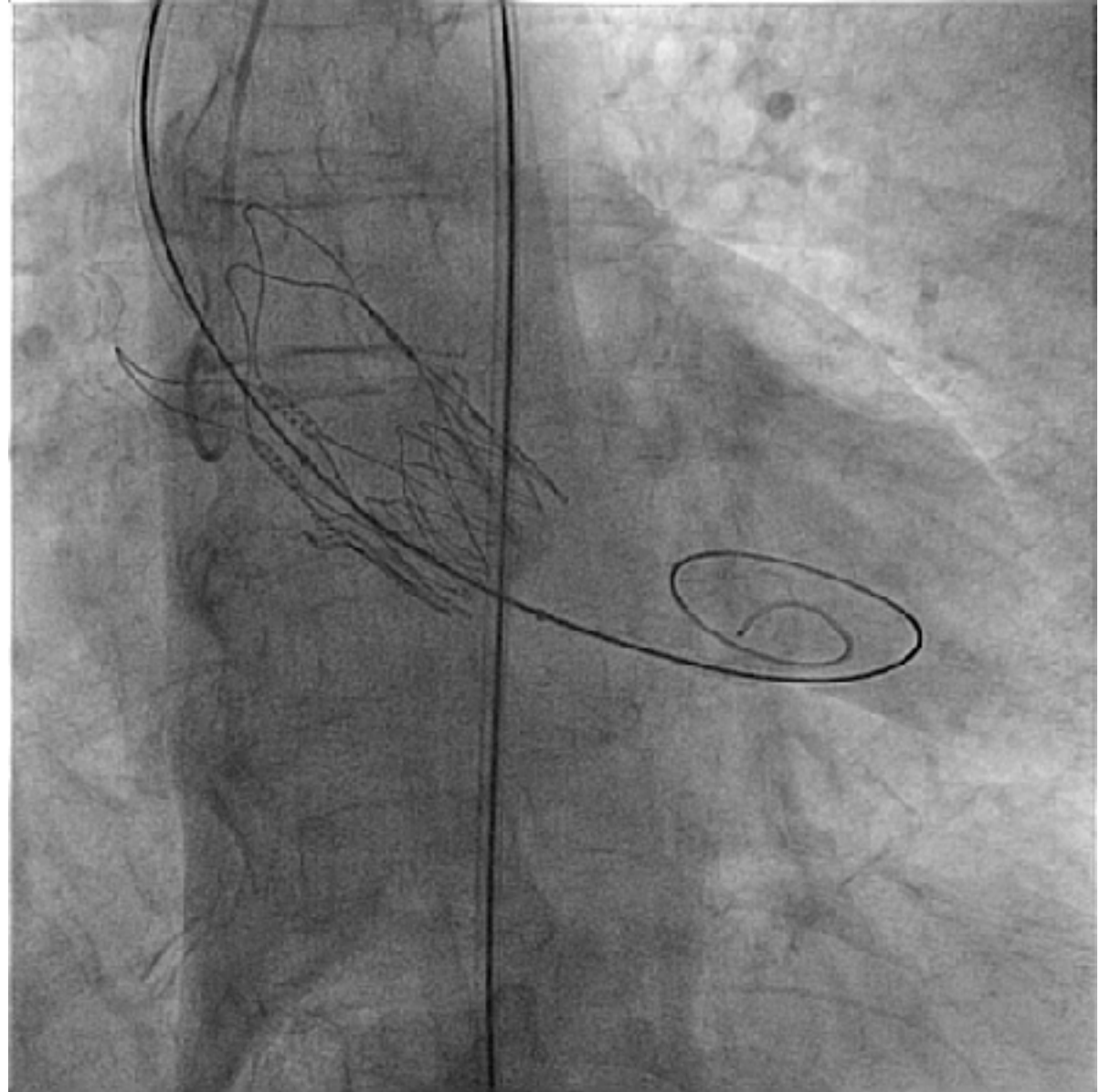


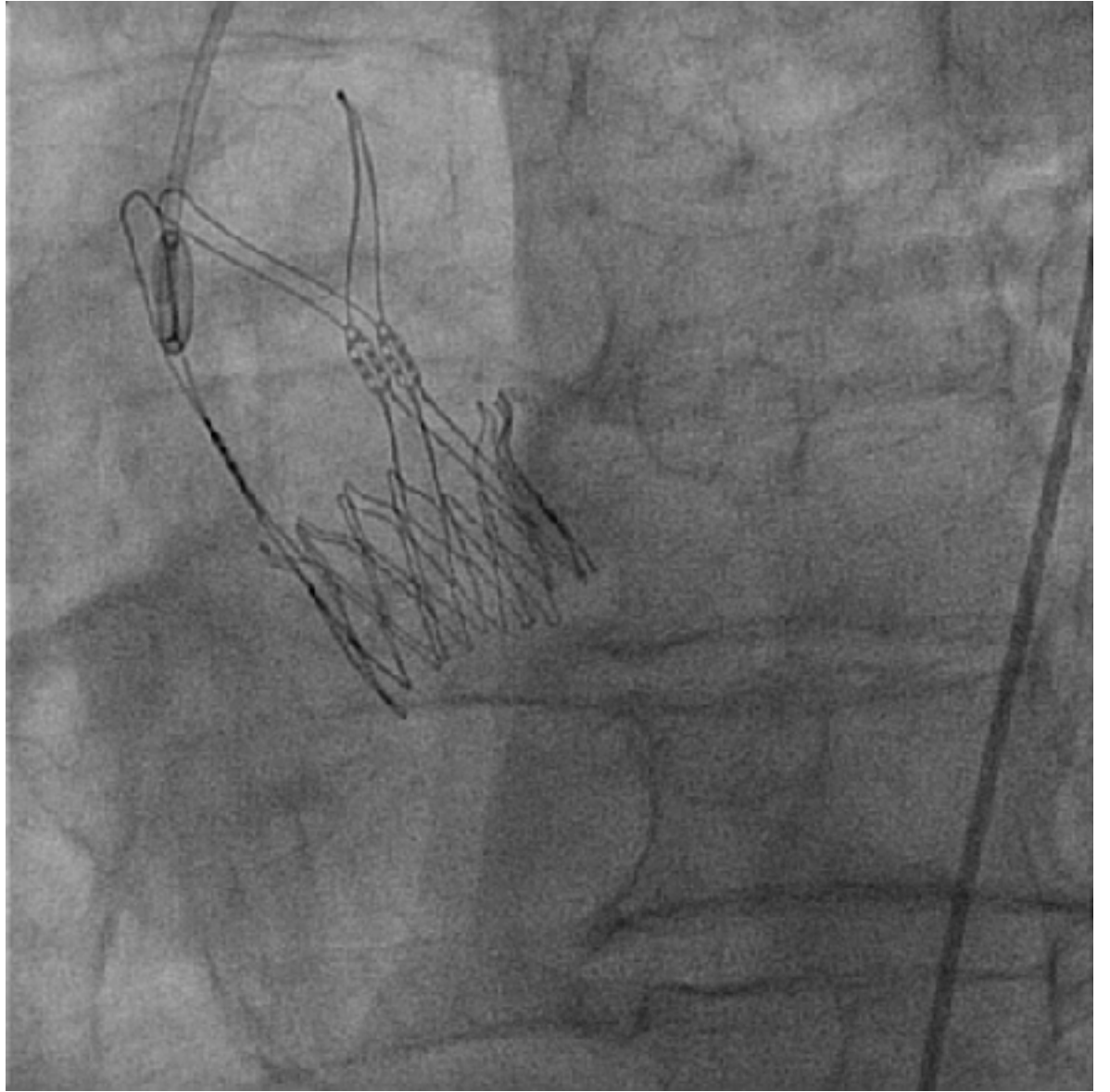
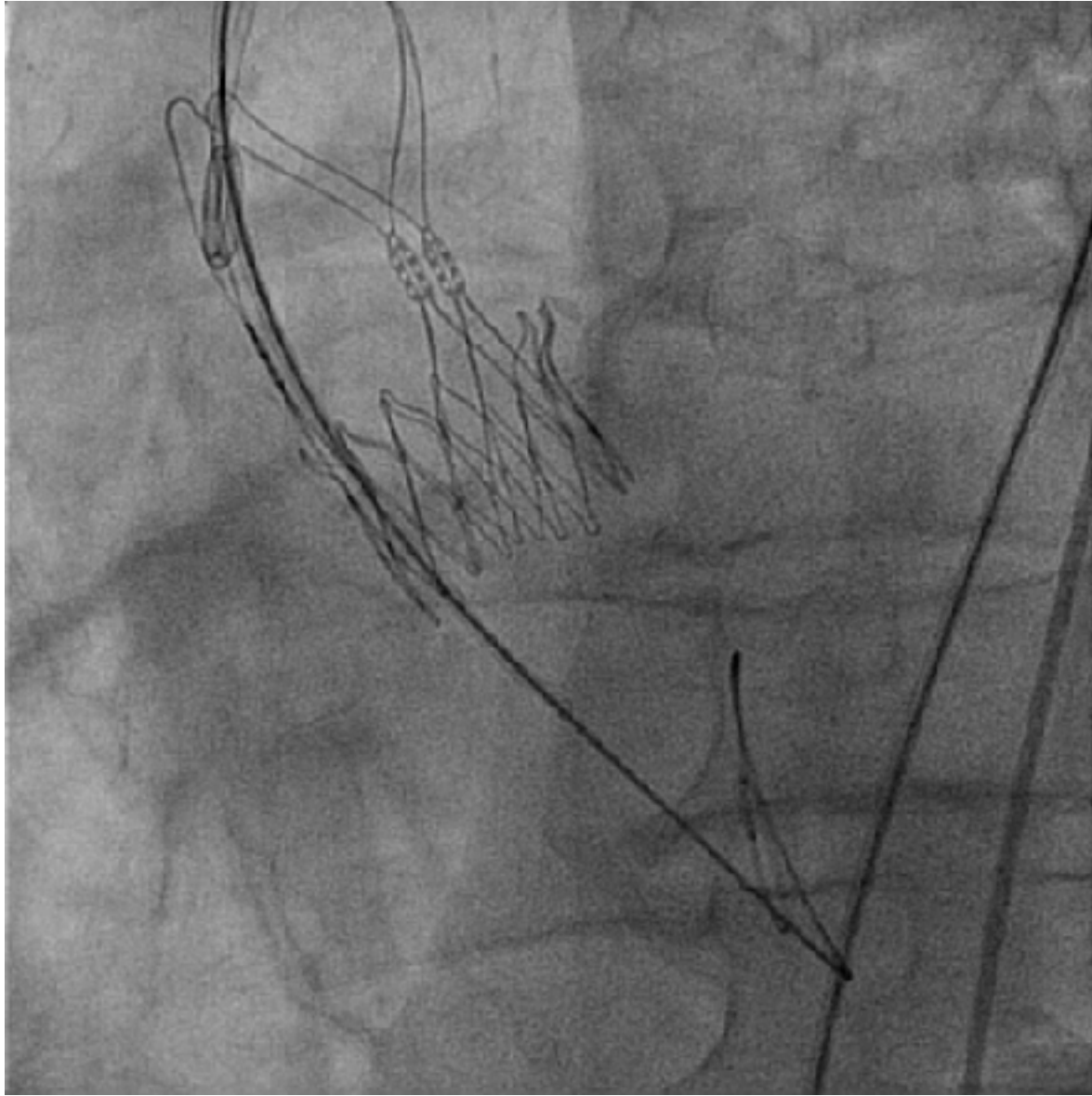












Messages clés

- **Procédure intuitive « step by step »**
- **Positionnement stable et largage prédictible**
- **Très bonnes performances (gradients bas et outcomes)**
- **Sélection anatomies « faciles » pour premiers cas**

Merci

